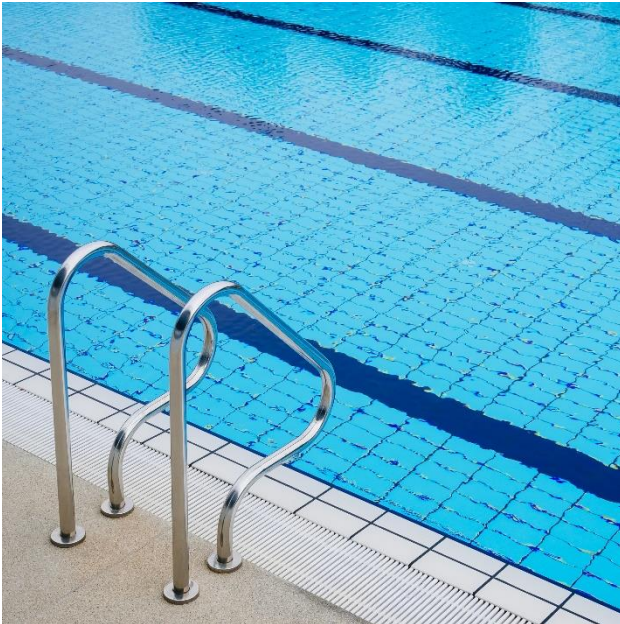


FACTS

Municipalities

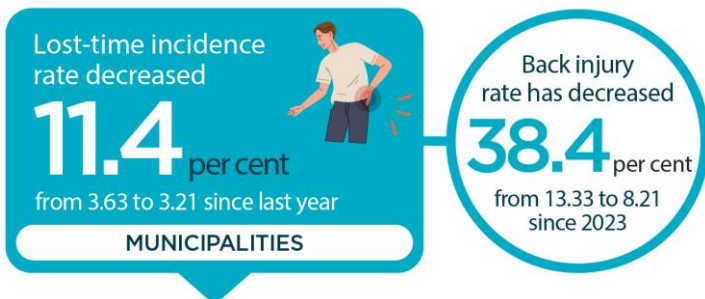


Industry Highlights

Municipalities are defined as local council authorities which provide local services, facilities, safety and infrastructure for communities.

Currently, there are approximately 276 incorporated municipalities delivering services to 89 percent of the provincial population.

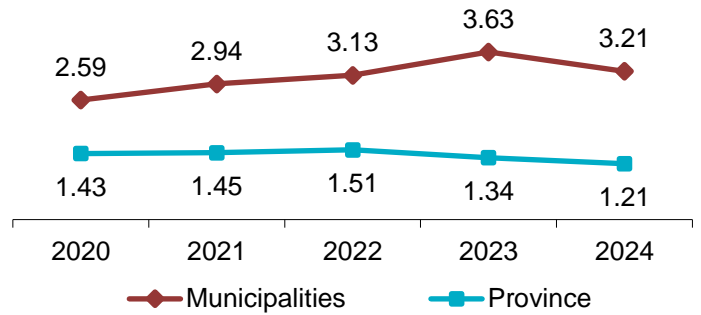
Between 2020 and 2024, annual average employment* decreased by 17.6%, from 3,400 to 2,800 in the industry.



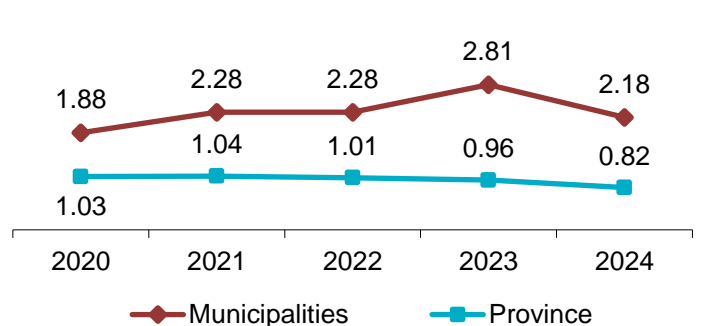
*Source: Statistics Canada

Industry Facts 2024

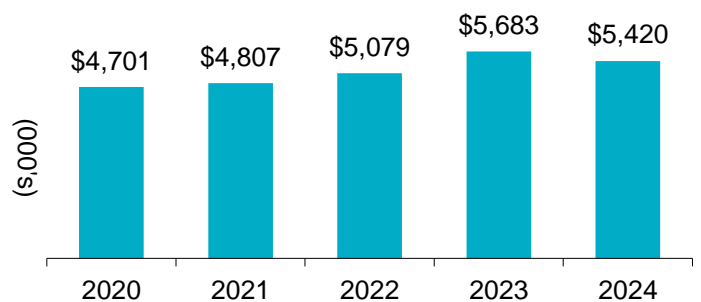
Lost-time Incidence Rate/100 Employees



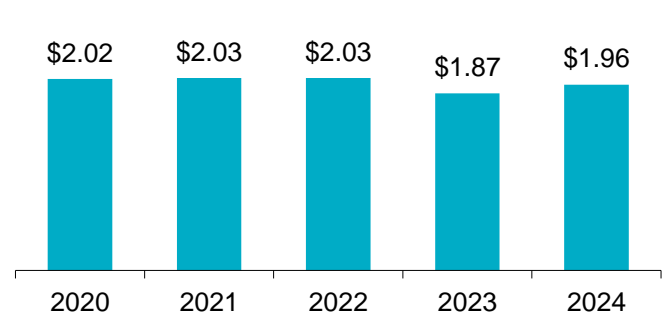
Soft Tissue Incidence Rate/100 Employees



Total Claim Payments



Assessment Rate



For more information

Contact WorkplaceNL at: 709.778.1552 or 1.800.563.9000
w workplacenl.ca

WorkplaceNL

Health | Safety | Compensation

FACTS

Municipalities Industry Highlights *continued*

Municipalities

Province

	2020	2021	2022	2023	2024	2020	2021	2022	2023	2024
Lost-time Claims	88	94	100	98	90	3,106	3,259	3,540	3,193	2,971
Health Care Only Claims	41	39	43	30	36	1,161	1,130	1,190	1,093	1,032
Fatality Claims	2	1	2	1	1	35	18	30	15	26
Paid Weeks (000's)	5.2	5.3	5.5	5.9	5.1	262.4	265.1	259.0	256.0	248.0

Lost-time claims by top 5 type of accidents, 2020-2024

Type of Accident	% Total Lost-time Claims
Fall to floor, walkway, or other surface	17%
Bodily reaction and exertion	13%
Overexertion in lifting	11%
Contact with objects and equipment	5%
Slip, trip, loss of balance-without fall	4%

Lost-time claims by top 5 nature of injuries, 2020-2024

Nature of Injury	% Total Lost-time Claims
Sprains, strains, tears	38%
Soreness, pain, hurt, except the back	13%
Back pain, hurt back	10%
Fractures	5%
Concussions	3%

Lost-time claims by top 5 parts of body injured, 2020-2024

Body Part	% Total Lost-time Claims
Multiple body parts	15%
Knee(s)	8%
Lower back	8%
Lumbo-sacral region	7%
Shoulder, clavicle, scapula, trapezius	7%

Lost-time claims by top 5 occupations, 2020-2024

Occupations	% Total Lost-time Claims
Public works and maintenance labourers	42%
Heavy equipment operators-except crane	17%
Public works equipment operators	13%
Firefighters	6%
Heavy-duty equipment mechanics	3%

e safety@workplacenl.ca

For more information

Contact WorkplaceNL at: 709.778.1552 or 1.800.563.9000
w workplacenl.ca

WorkplaceNL

Health | Safety | Compensation