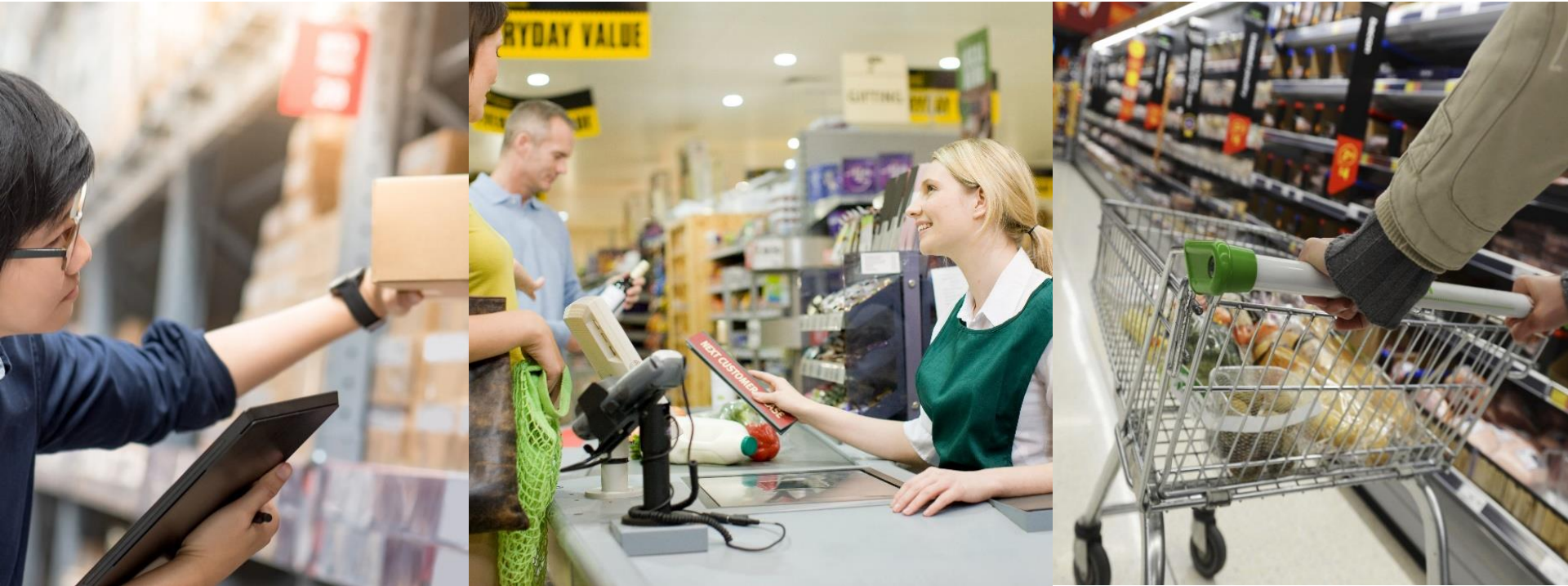


Workplace Safety in the Wholesale and Retail Trade Industry



WorkplaceNL
2023

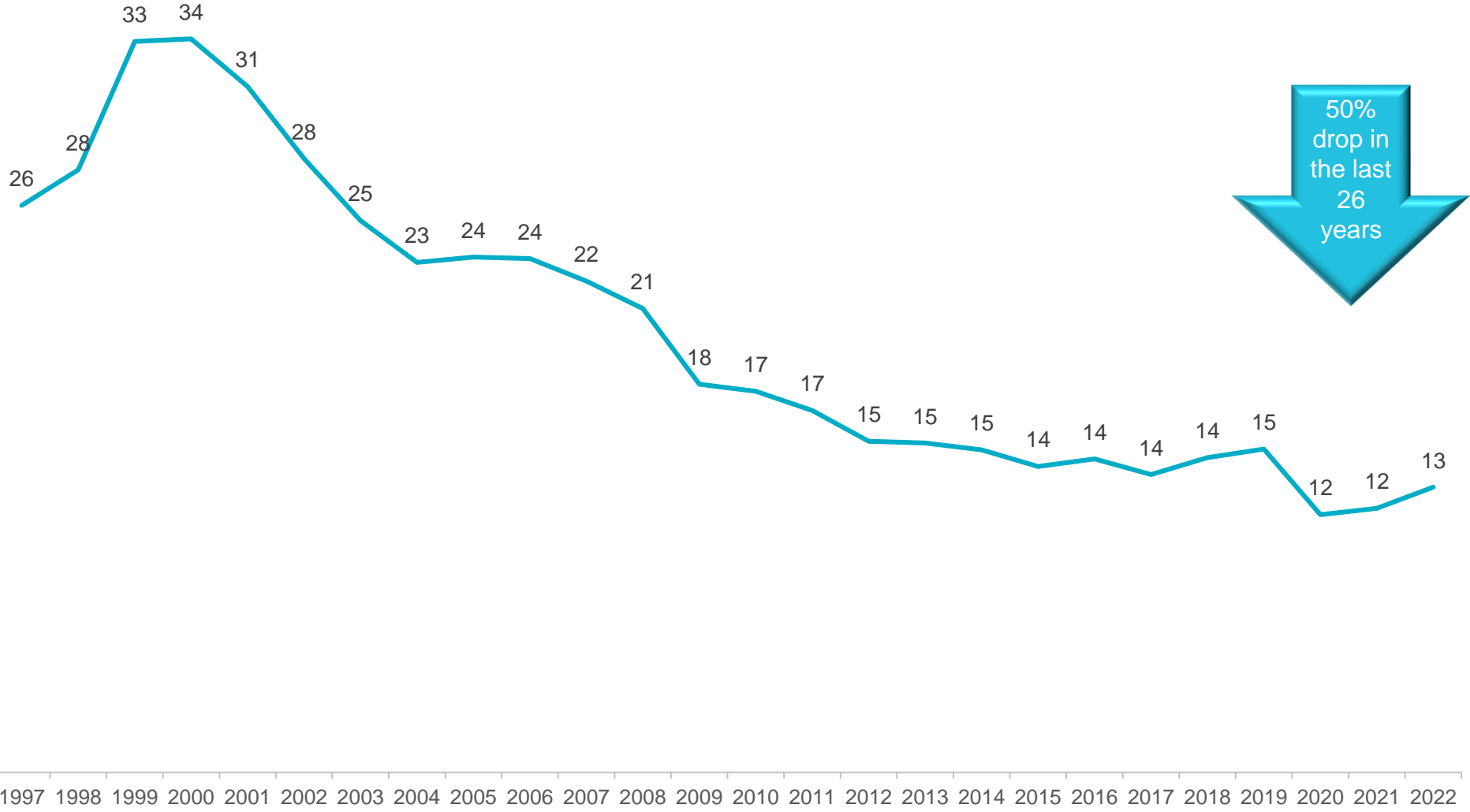
Provincial Perspective

All Rates (2006 to 2022) have been revised due to rebased Employment effective January, 2023, Statistics Canada

Definitions

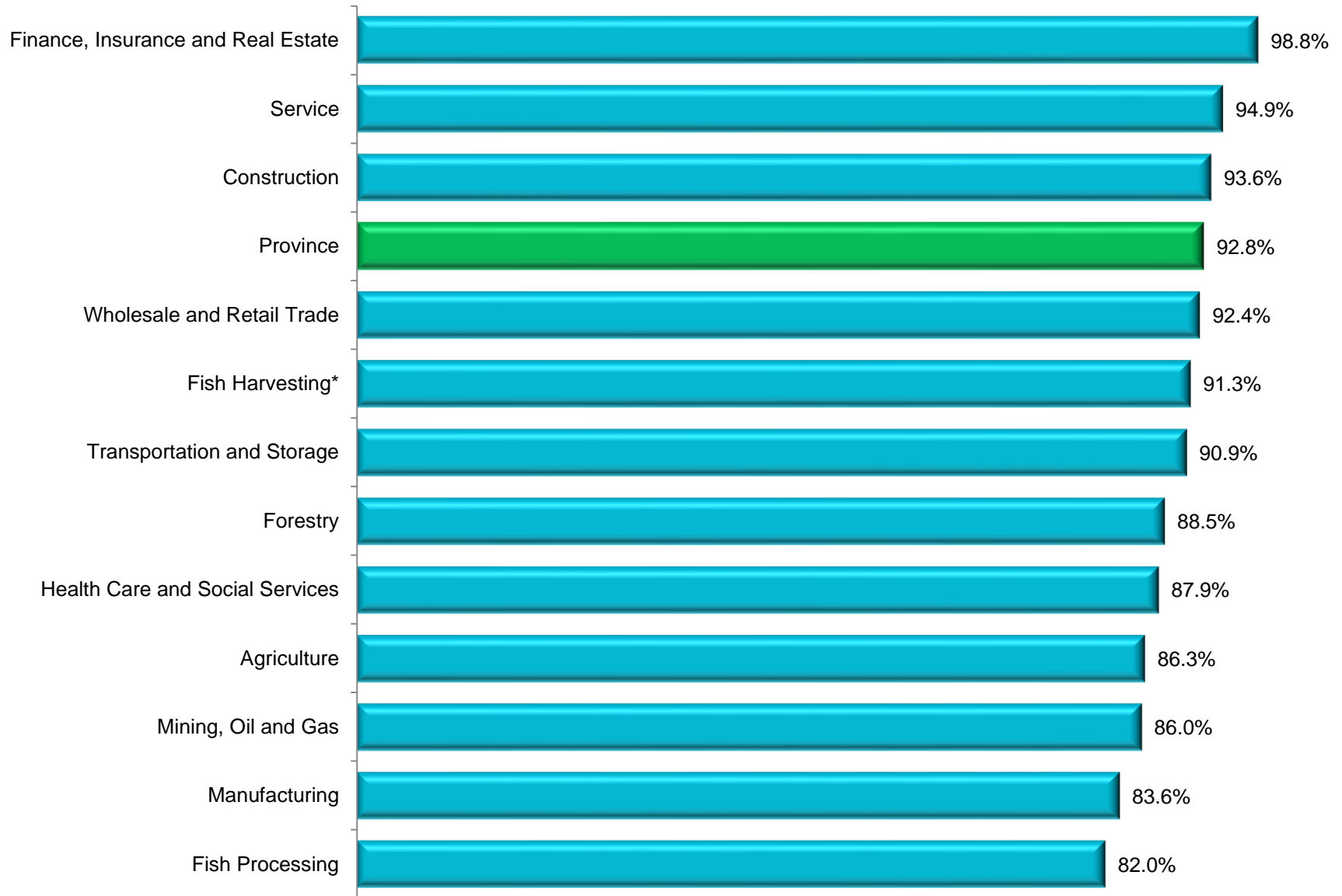
- **Annual Average Employment** levels are used in all WorkplaceNL calculations of its injury rates. The annual average employment is based on Statistics Canada Labour Force Survey (LFS) estimates. *“The Labour Force Survey (LFS) provides estimates of employment and unemployment, which are among the most timely and important measures of the performance of the Canadian economy.” Statistics Canada*
 - Annual average employment captures those aged 15 and older who are employed at the time of the Labour Force Survey.
 - All Injury Rates (2006 to 2022) have been revised due to rebased Annual Average Employment effective January, 2023, Statistics Canada.
- **Injury Rates**
 - All injury rates are presented as per either 100, 1,000, 10,000 or 100,000 employees. These various dimensions are used to make the injury rates more meaningful statistics as a proportion of workers employed. Employment levels used in the calculations are based on Statistics Canada, *Labour Force Survey as supplied by Newfoundland and Labrador Statistics Agency*.
 - Injury rate calculation example:
 - $(\text{Claims} \times 100) / \text{Employment Level}$
- **Claims Costs by Payment Year**
 - Claims costs by payment year are claim costs that are paid out in a given year irrespective of the date of injury.
- **Health and Safety Awareness Index**
 - The Health and Safety Awareness Index is an indicator of the level of awareness of health and safety in the workplace. It is calculated based on responses to select questions from the Health and Safety Awareness Survey for workers conducted by *Newfoundland and Labrador Statistics Agency*. There are a total of 18 questions taken from Knowledge, Awareness and Empowerment categories and scored to produce an index value.

Number of Workers Injured per Day (on average) Newfoundland and Labrador 1997 - 2022

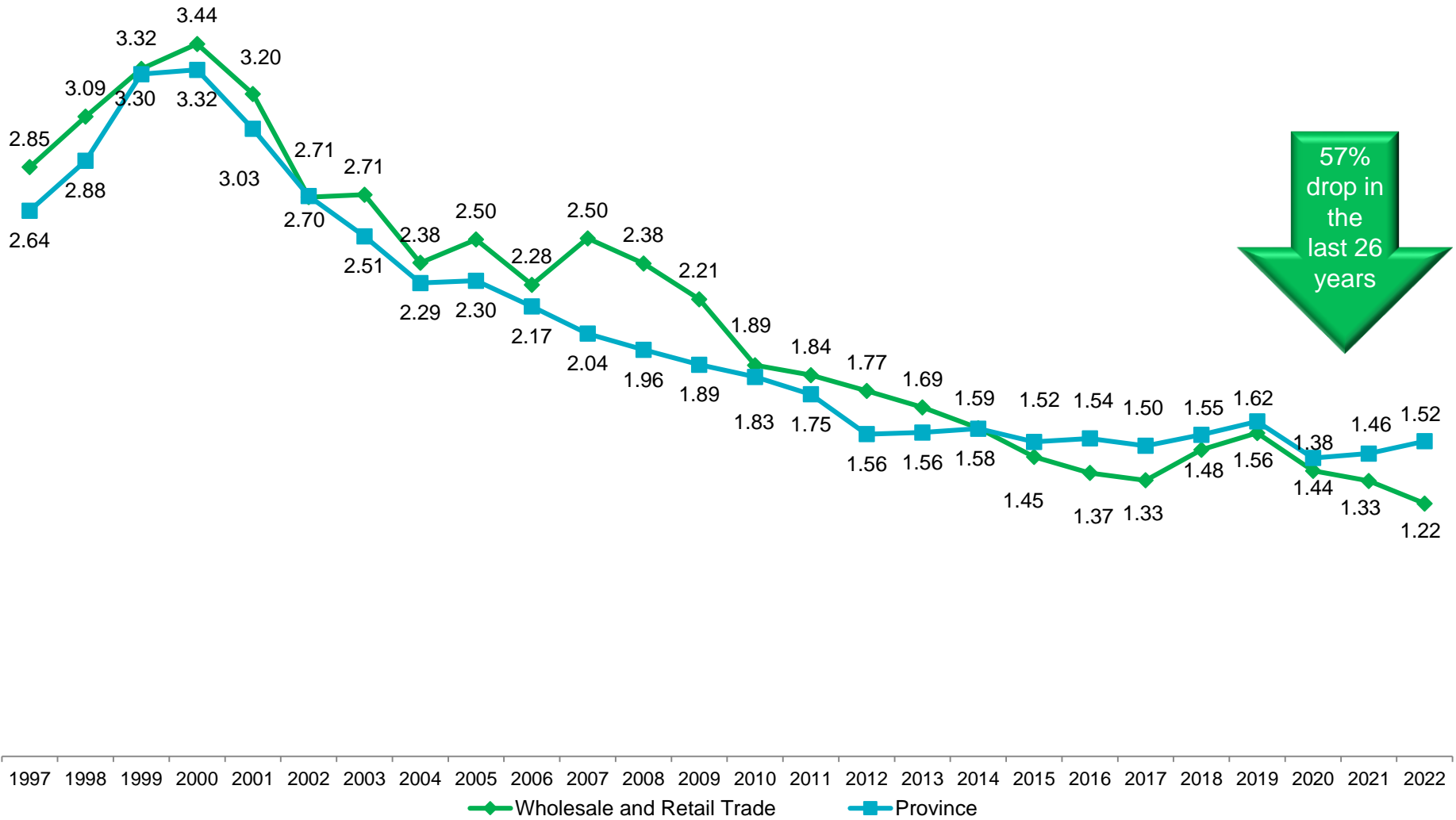


50%
drop in
the last
26
years

Percentage of Injury Free Employers by Industry Newfoundland and Labrador 2022

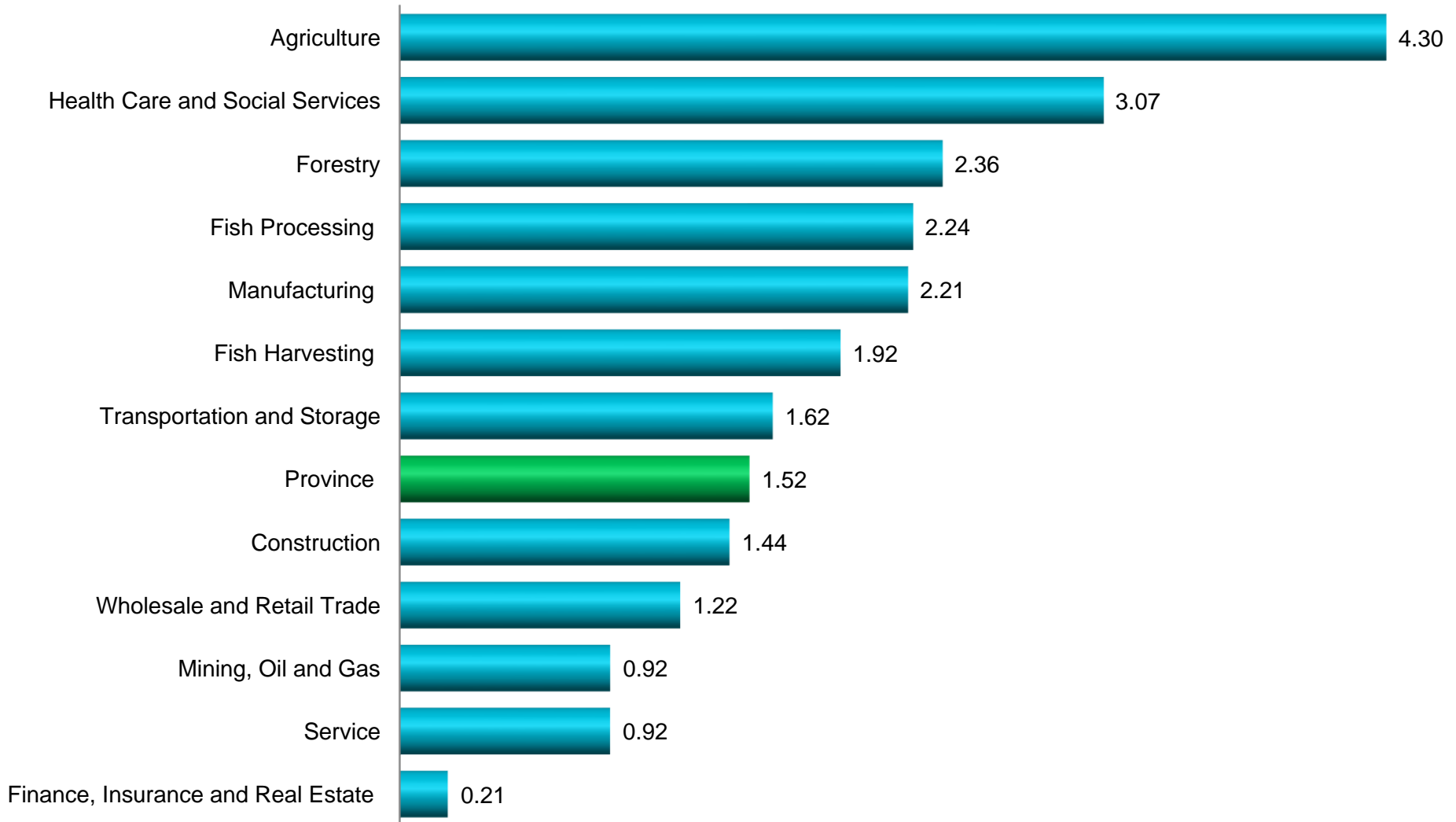


Wholesale and Retail Trade Industry
 Lost-time Incidence Rate / 100 Employees
 Newfoundland and Labrador 1997 - 2022

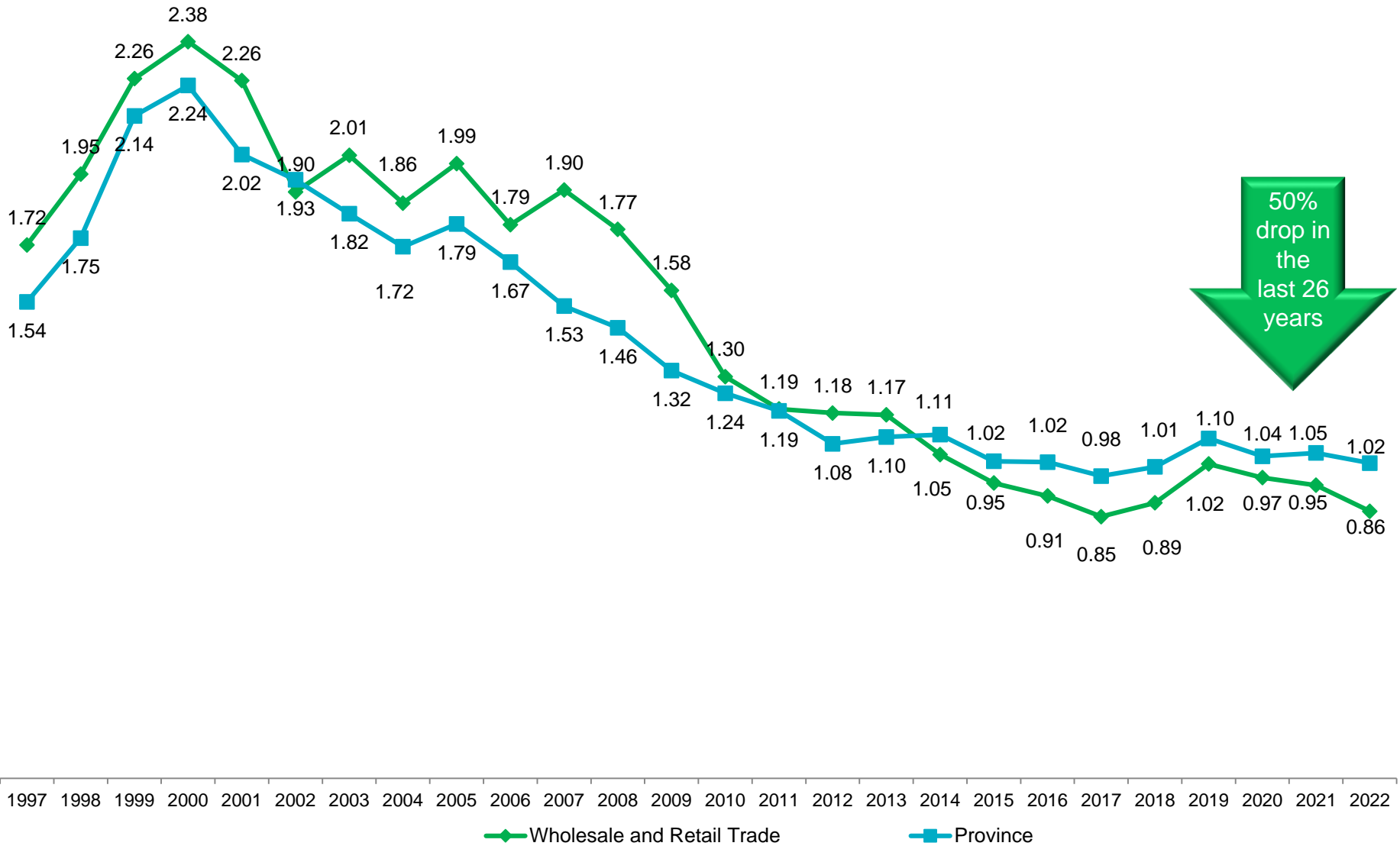


57%
 drop in
 the
 last 26
 years

Lost-time Incidence Rate per 100 Employees
Industry Comparison
Newfoundland and Labrador 2022

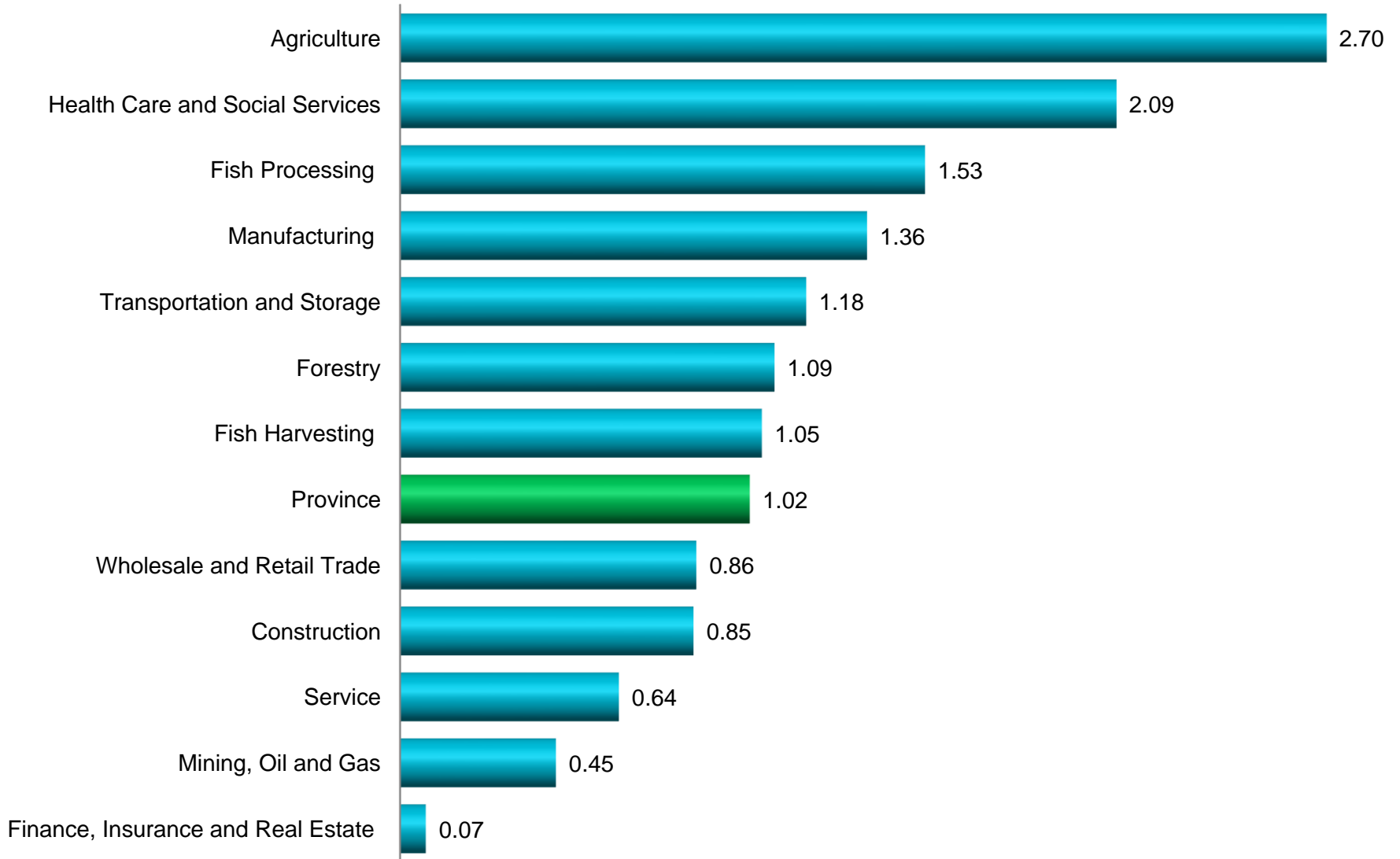


Wholesale and Retail Trade Industry Soft Tissue Incidence Rate / 100 Employees Newfoundland and Labrador 1997 - 2022

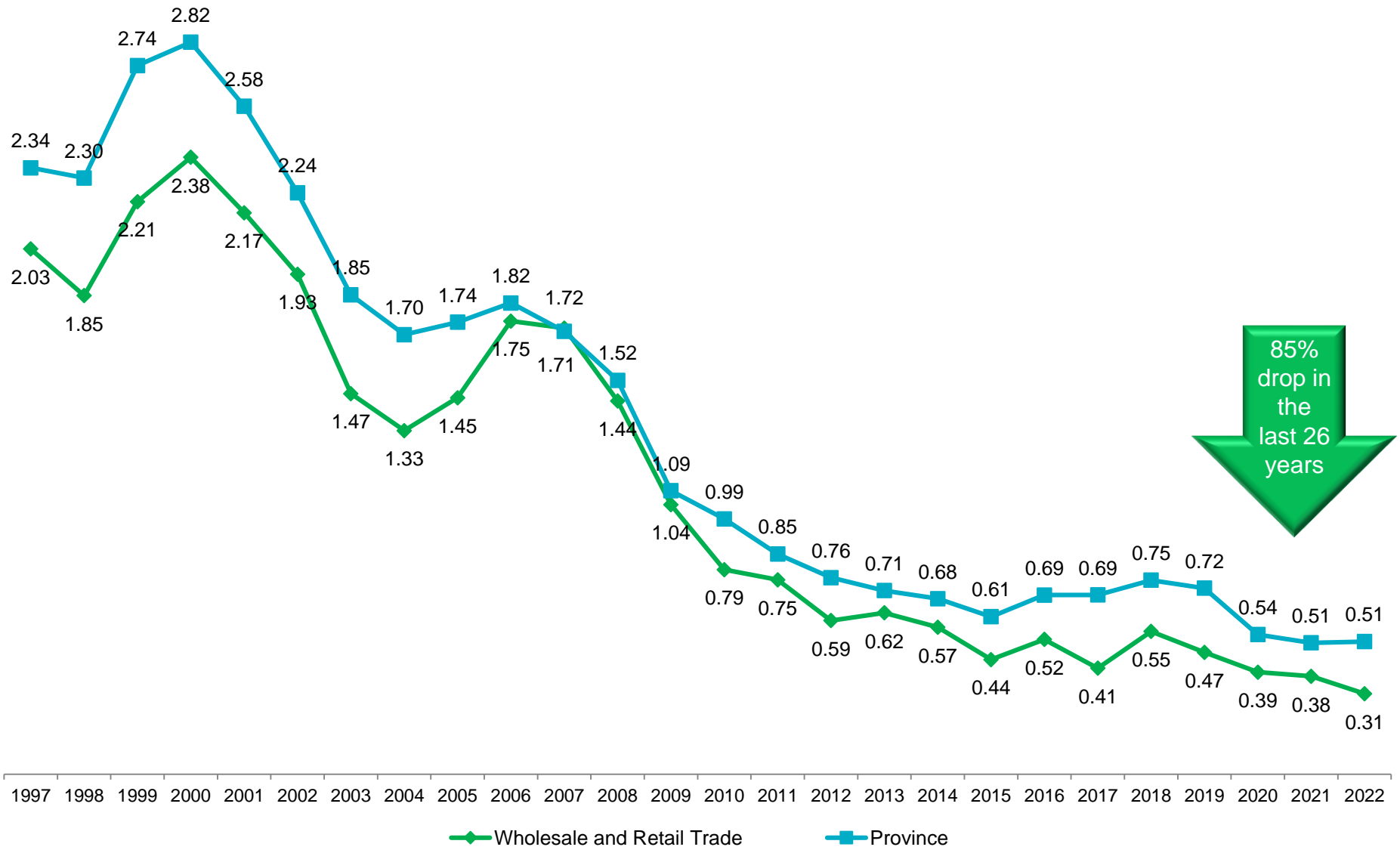


50%
drop in
the
last
26
years

Soft Tissue Incidence Rate per 100 Employees
Industry Comparison
Newfoundland and Labrador 2022

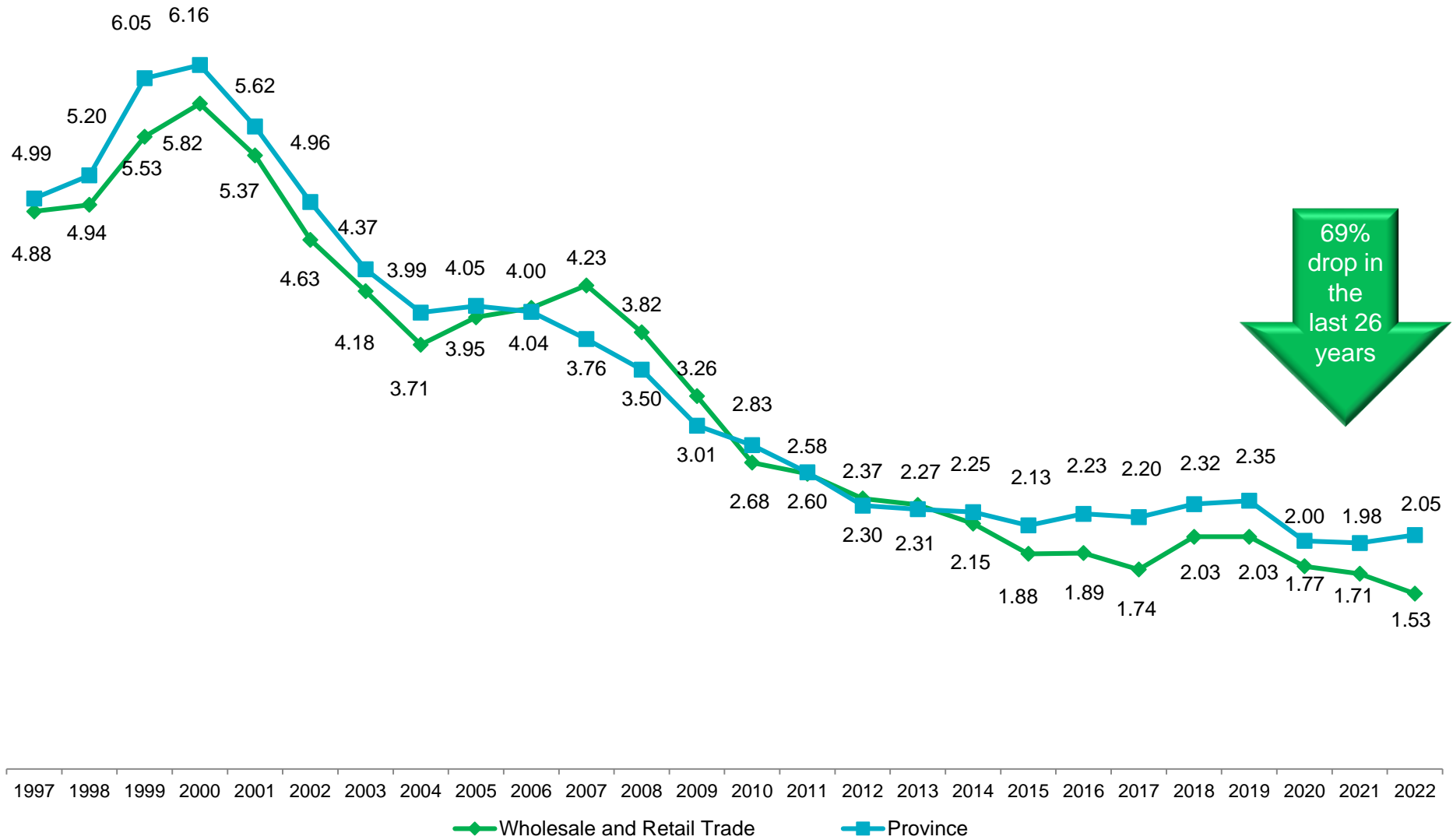


Wholesale and Retail Trade Industry Health Care Only Incidence Rate / 100 Employees Newfoundland and Labrador 1997 - 2022

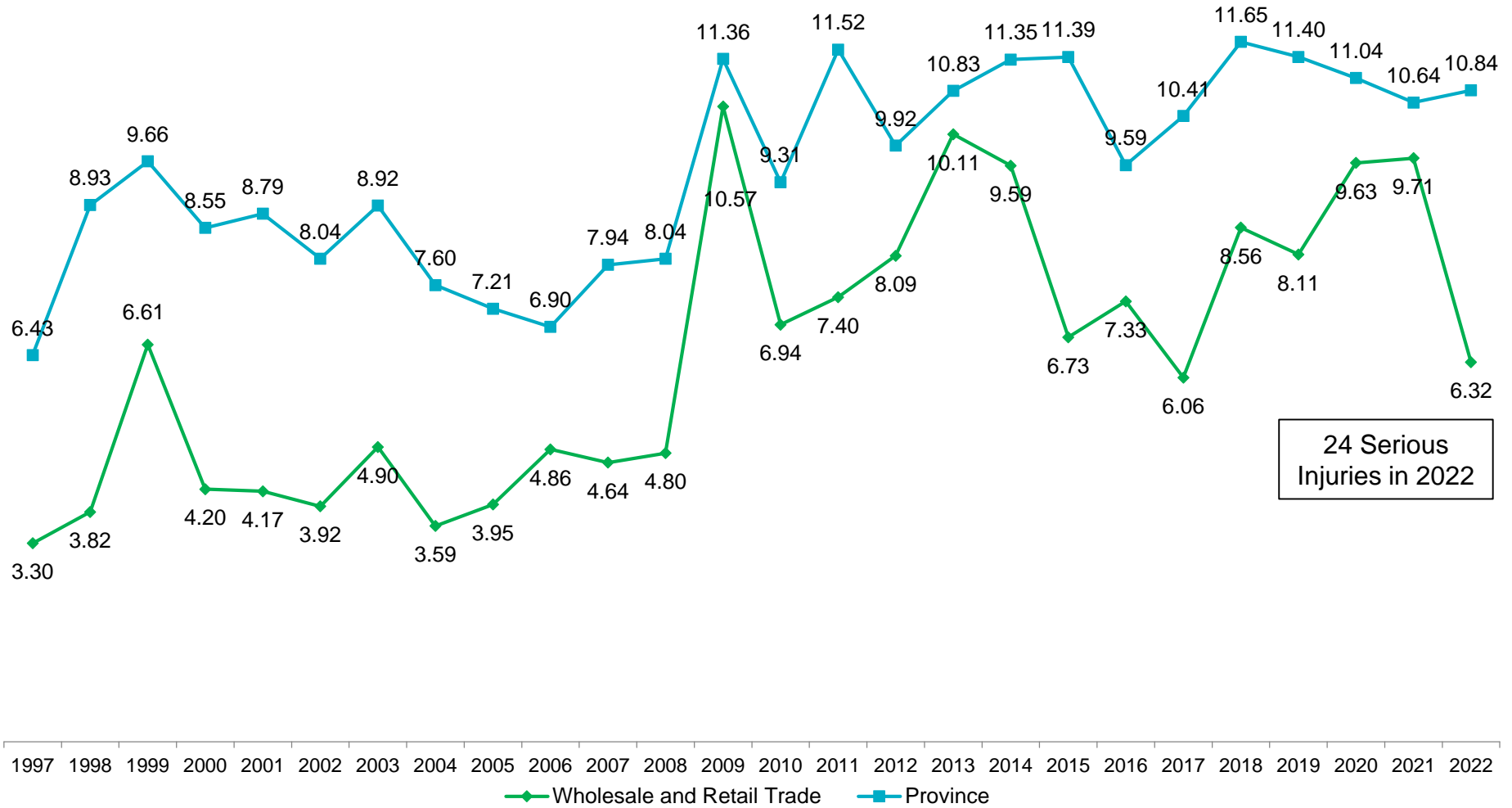


85%
drop in
the
last 26
years

Wholesale and Retail Trade Industry
 All Claims Incidence Rate / 100 Employees
 Newfoundland and Labrador 1997 - 2022

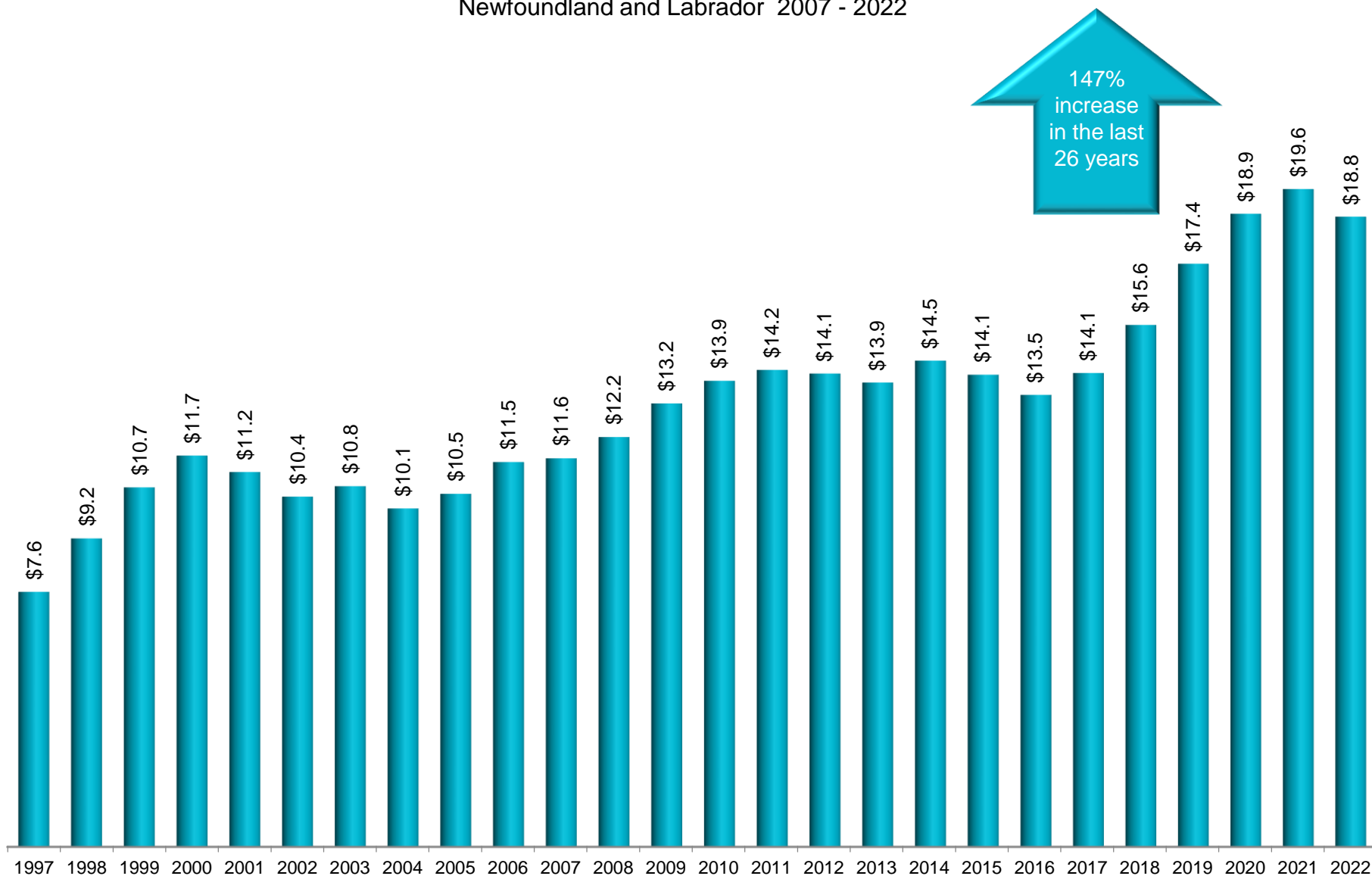


Wholesale and Retail Trade Industry
 Serious Injury Rate / 10,000 Employees
 Newfoundland and Labrador 1997 - 2022

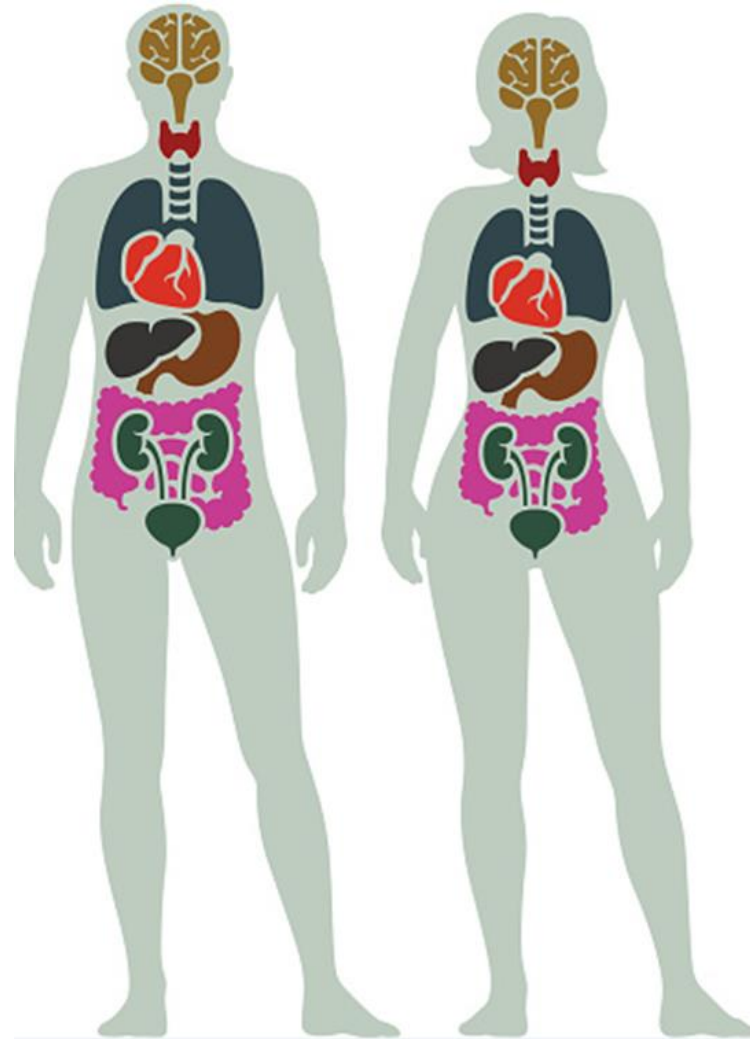


24 Serious Injuries in 2022

Wholesale and Retail Trade Industry
Total Claim Costs (millions) by Payment Year
Newfoundland and Labrador 2007 - 2022

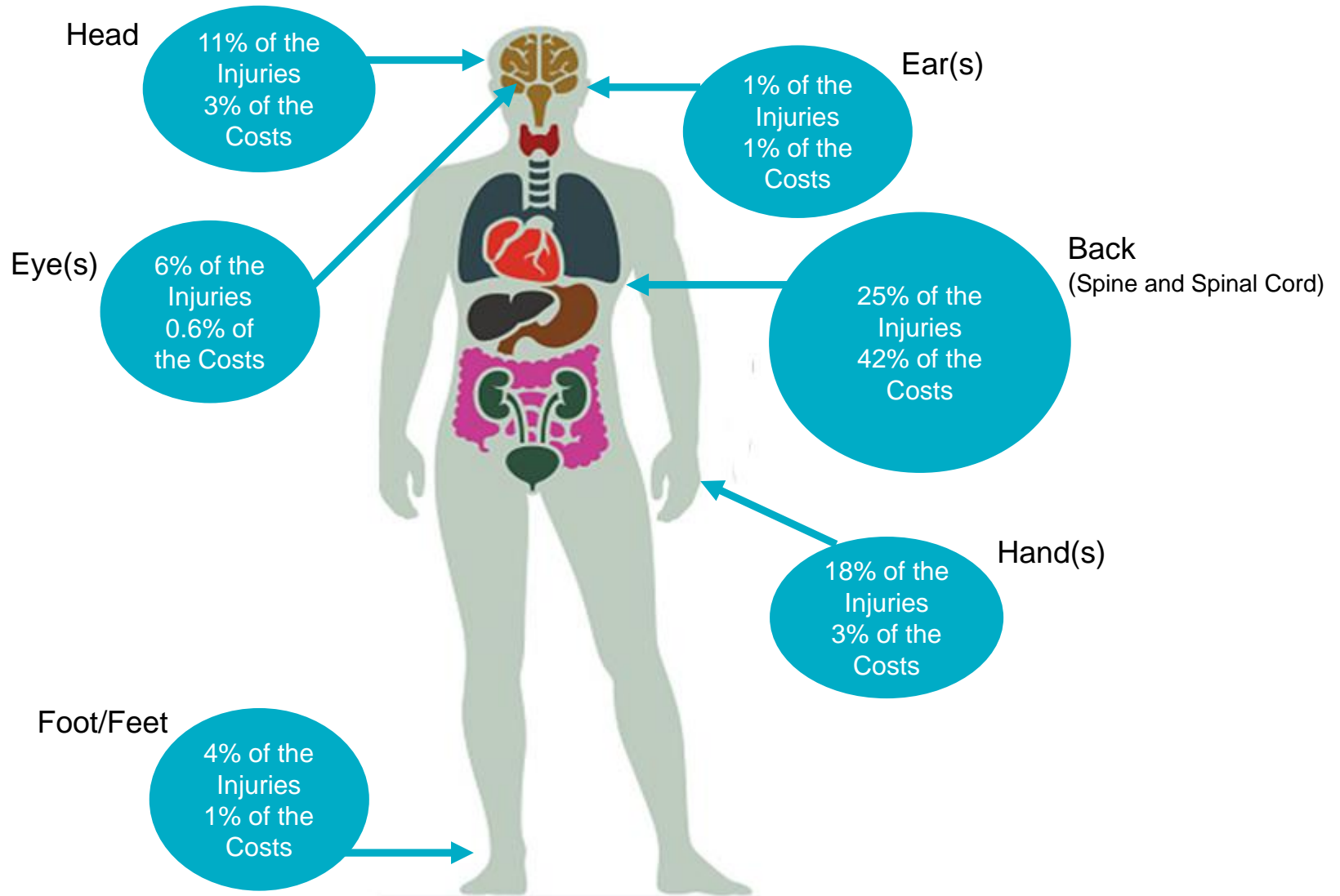


Selected Parts of Body Metrics

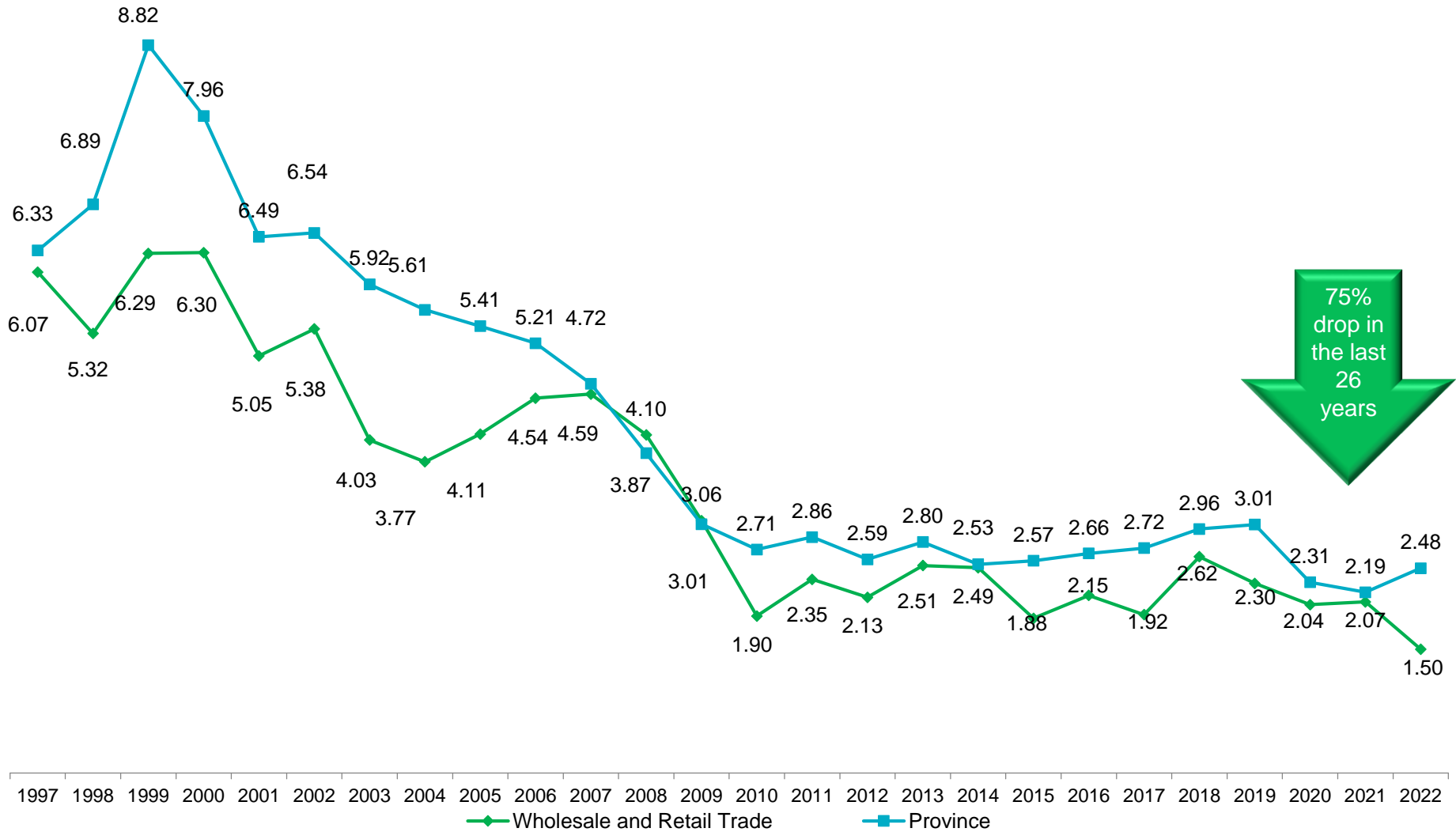


Work related Physical Injuries

What are the effects over the last 26 years?



Wholesale and Retail Trade Industry
 Head Injury Rate / 1,000 Employees
 Newfoundland and Labrador 1997 - 2022



75%
 drop in
 the last
 26
 years

Wholesale and Retail Trade Industry
 Eye Injury Rate / 1,000 Employees
 Newfoundland and Labrador 1997 - 2022



15 Eye Injuries
in the 2022

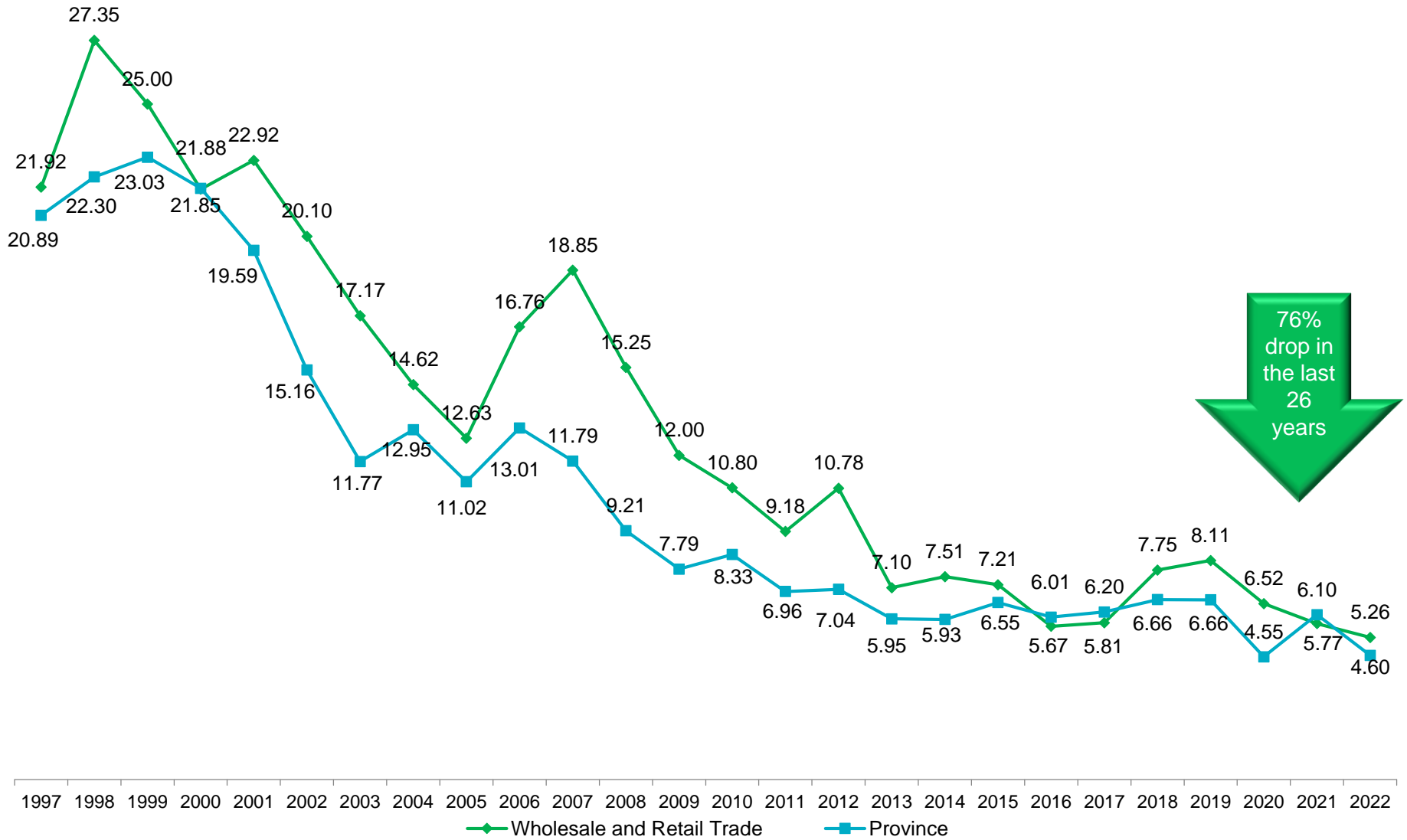
Wholesale and Retail Trade Industry
 Hand Injury Rate / 1,000 Employees
 Newfoundland and Labrador 1997 - 2022



Wholesale and Retail Trade Industry Back Injury Rate / 1,000 Employees Newfoundland and Labrador 1997 - 2022



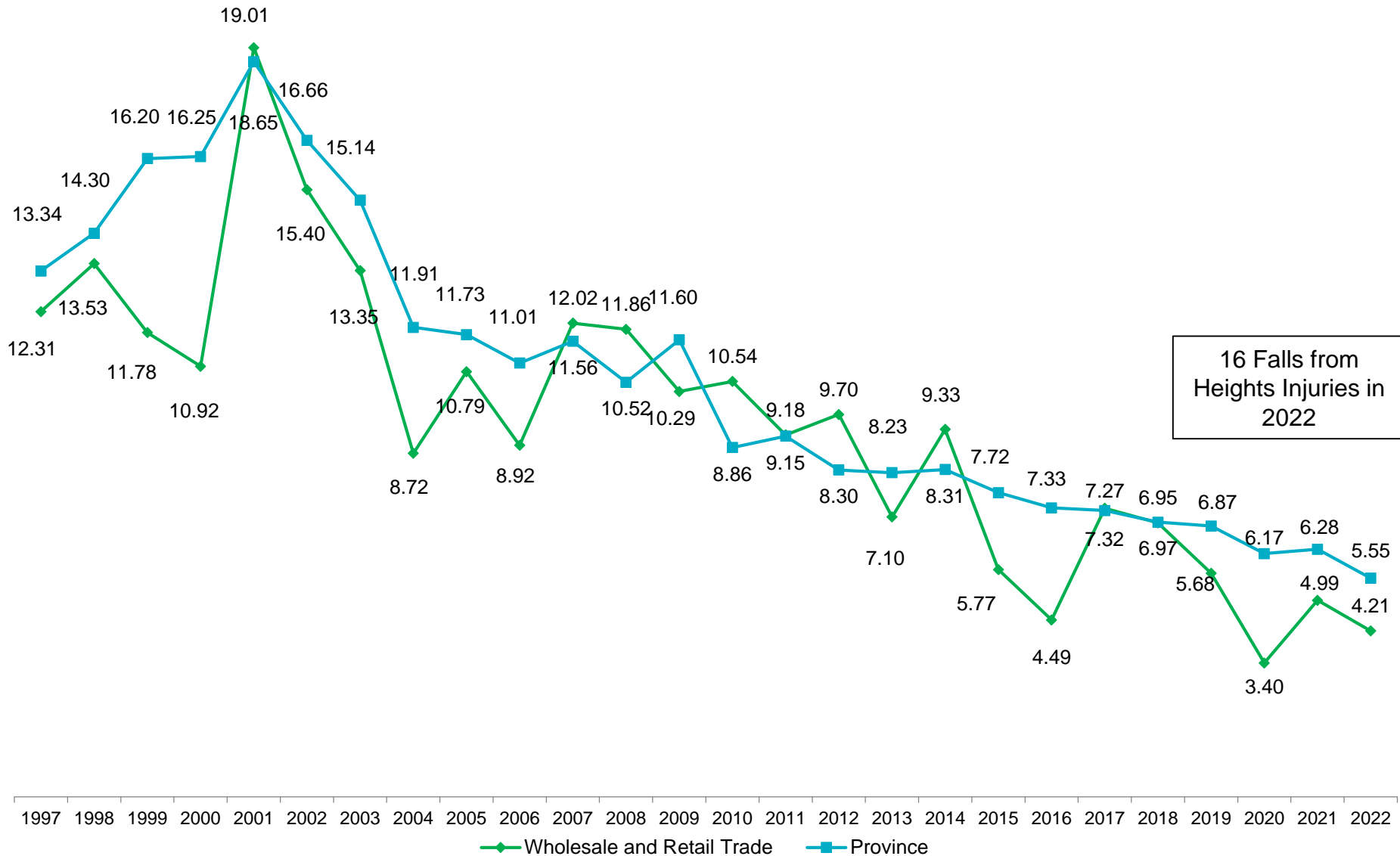
Wholesale and Retail Trade Industry Foot Injury Rate / 10,000 Employees Newfoundland and Labrador 1997 - 2022





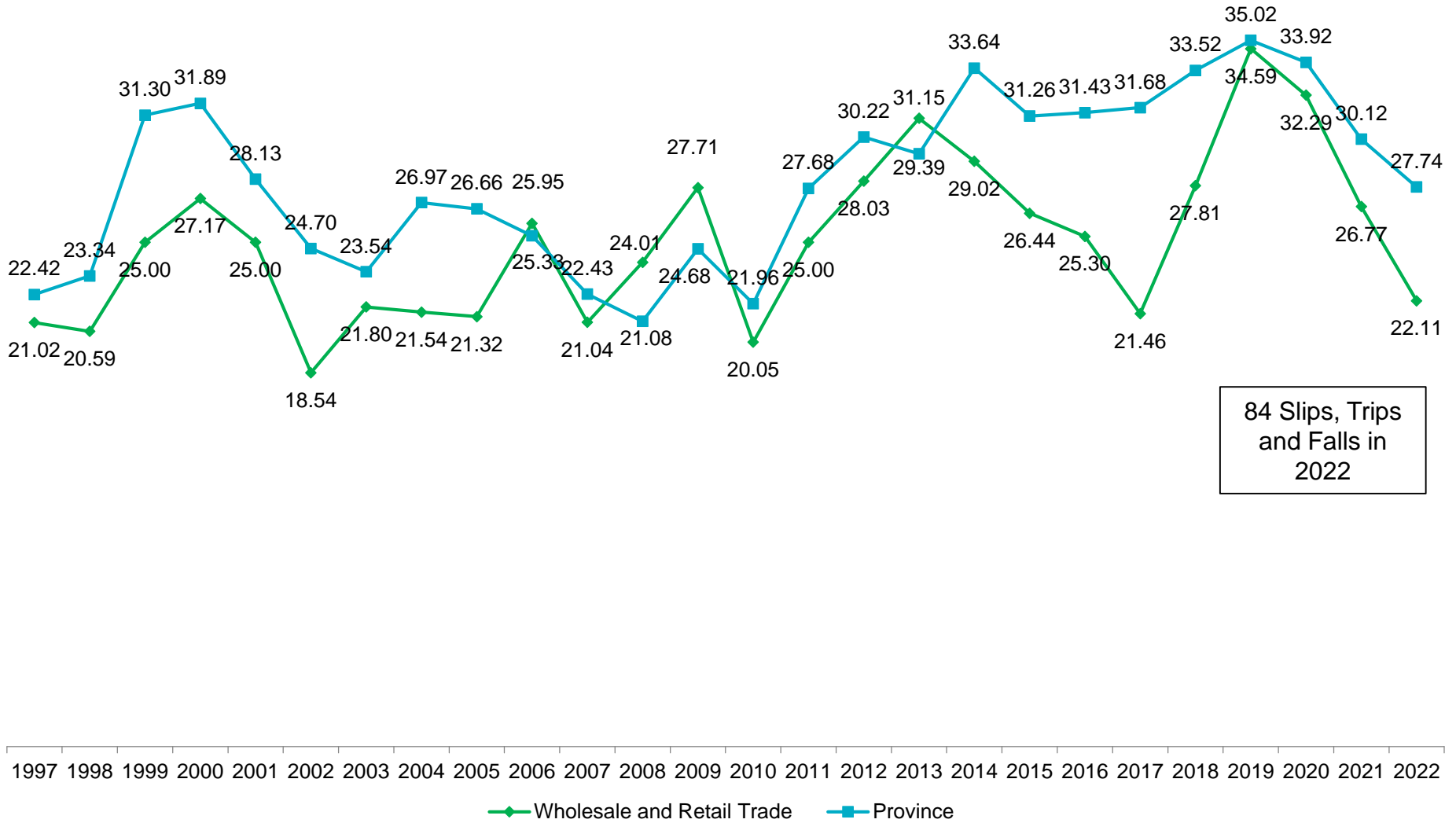
Selected Type of Accidents Metrics

Wholesale and Retail Trade Industry Falls from Heights Injury Rate / 10,000 Employees Newfoundland and Labrador 1997 - 2022



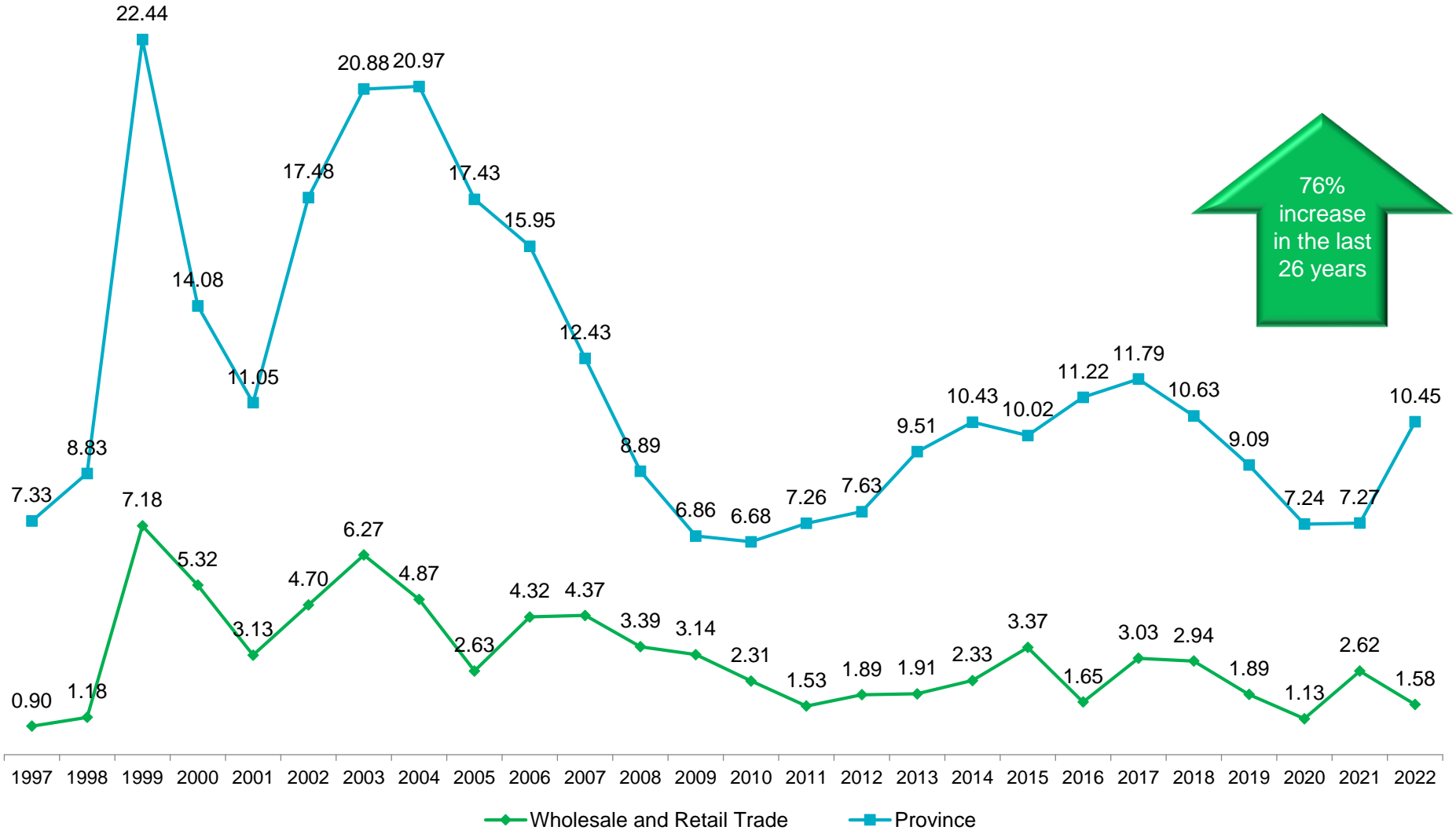
16 Falls from
Heights Injuries in
2022

Wholesale and Retail Trade Industry Slips, Trips and Falls Injury Rate / 10,000 Employees Newfoundland and Labrador 1997 - 2022



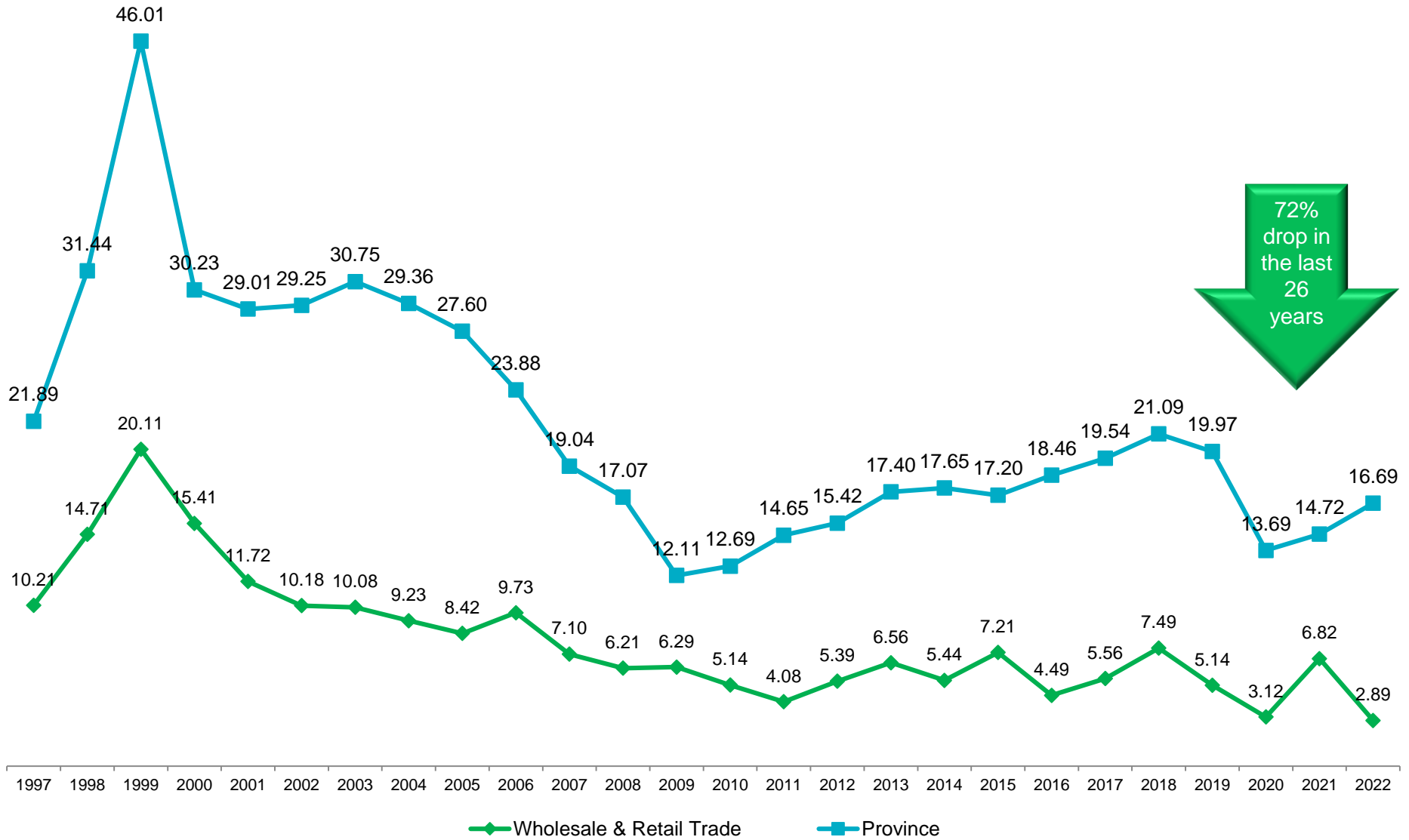
84 Slips, Trips
and Falls in
2022

Wholesale and Retail Trade Industry
 Hearing Loss Injury Rate / 10,000 Employees
 Newfoundland and Labrador 1997 - 2022



76%
 increase
 in the last
 26 years

Wholesale and Retail Trade Industry Occupational Disease Incidence Rate / 10,000 Employees Newfoundland and Labrador 1997 - 2022



72%
drop in
the last
26
years