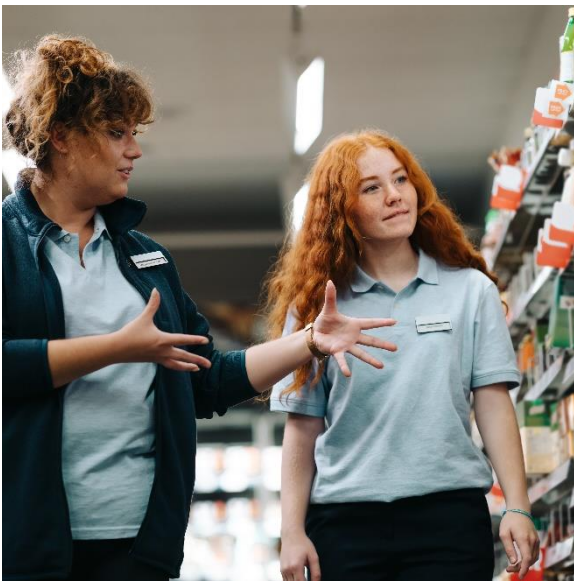


# FACTS

## Young Workers



### Industry Highlights

A young worker is defined as a person between the age of 15 and 24. They may be at risk of being injured due to lack of occupational health and safety knowledge and work experience. As a result, injuries often occur during the first few weeks on the job.

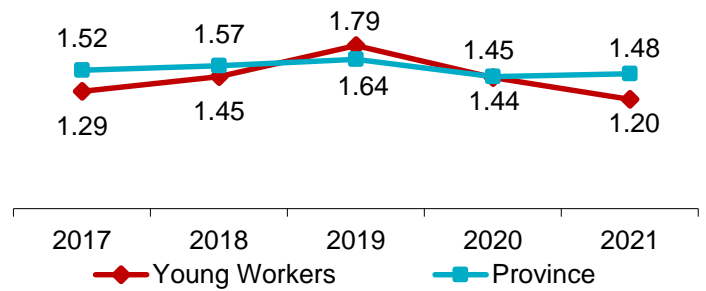
The number of young workers employed in the province fluctuates, with peak employment during the summer months. Between 2017 and 2021, young worker annual average employment\* decreased by 1.7%, from 28,700 to 28,200.



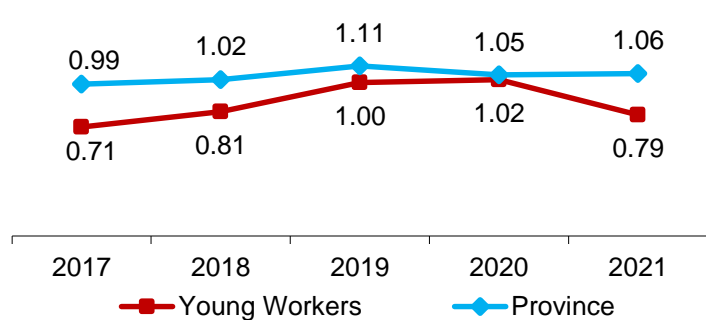
\*Source: Statistics Canada – Employment rebased January, 2021

## Industry Facts 2021

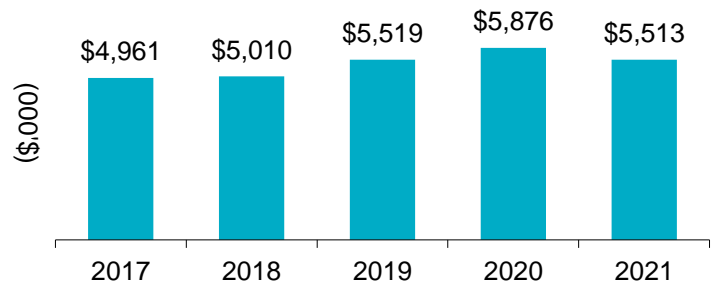
Lost-time Incidence Rate/100 Employees



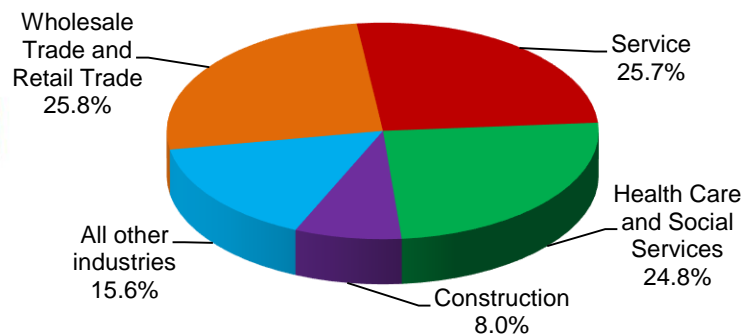
Soft Tissue Incidence Rate/100 Employees



Total Claim Payments



Percentage of Young Worker Lost-time Claims by Industry (2017-2021)



For more information

Contact WorkplaceNL at: 709.778.1552 or 1.800.563.9000  
w workplacenl.ca

WorkplaceNL

Health | Safety | Compensation

# FACTS

## Young Workers Industry Highlights *continued*

### Young Workers

### Province

|                    | 2017 | 2018 | 2019 | 2020 | 2021 | 2017  | 2018  | 2019  | 2020  | 2021  |
|--------------------|------|------|------|------|------|-------|-------|-------|-------|-------|
| Lost-time          | 369  | 390  | 485  | 379  | 338  | 3,386 | 3,522 | 3,720 | 3,106 | 3,259 |
| Health Care Only   | 134  | 147  | 153  | 120  | 117  | 1,561 | 1,697 | 1,651 | 1,161 | 1,130 |
| Fatalities         | 0    | 0    | 1    | 0    | 0    | 25    | 36    | 26    | 35    | 18    |
| Paid Weeks (000's) | 8.1  | 7.9  | 8.5  | 9.5  | 8.2  | 243.5 | 244.3 | 251.5 | 262.4 | 265.1 |

### Lost-time claims by top 5 type of accidents, 2017-2021

| Type of Accident                            | % Total Lost-time Claims |
|---|--------------------------|
| Overexertion in lifting                     | 12%                      |
| Fall to floor, walkway, or other surface    | 12%                      |
| Bodily reaction and exertion                | 7%                       |
| Contact with hot objects or substances      | 5%                       |
| Bending/climbing/crawling/reaching/twisting | 4%                       |

### Lost-time claims by top 5 nature of injuries, 2017-2021

| Nature of Injury        | % Total Lost-time Claims |
|-------------------------|--------------------------|
| Sprains, strains, tears | 36%                      |
| Back pain, hurt back    | 7%                       |
| Bruises, contusions     | 6%                       |
| Cuts, lacerations       | 6%                       |
| Fractures               | 6%                       |

### Lost-time claims by top 5 parts of body injured, 2017-2021

| Body Part                              | % Total Lost-time Claims |
|--|--------------------------|
| Multiple body parts                    | 13%                      |
| Knee(s)                                | 7%                       |
| Shoulder, clavicle, scapula, trapezius | 7%                       |
| Hand(s), except finger(s)              | 6%                       |
| Finger(s), fingernail(s)               | 6%                       |

### Lost-time claims by top 5 occupations, 2017-2021

| Occupations                             | % Total Lost-time Claims |
|---|--------------------------|
| Retail salespersons and sales clerks    | 7%                       |
| Food counter attendants/kitchen/related | 6%                       |
| Personal care attendants                | 6%                       |
| Licensed practical nurses               | 5%                       |
| Grocery clerks/store shelf stockpersons | 5%                       |

e [safety@workplacenl.ca](mailto:safety@workplacenl.ca)

### For more information

Contact WorkplaceNL at: 709.778.1552 or 1.800.563.9000  
w [workplacenl.ca](http://workplacenl.ca)

# WorkplaceNL

Health | Safety | Compensation