

FACTS

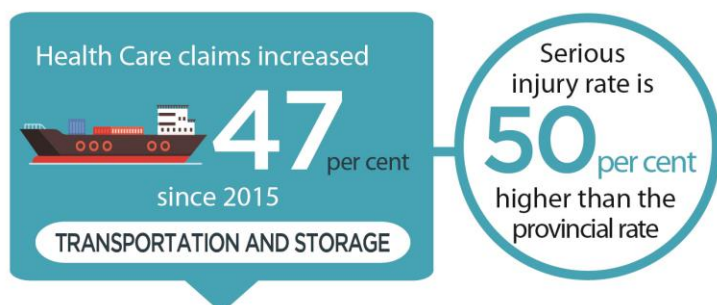
Transportation and Storage



Industry Highlights

The Transportation and Storage Industry includes sectors such as air, rail, truck, water transport services, public transit systems, and storage and warehousing services.

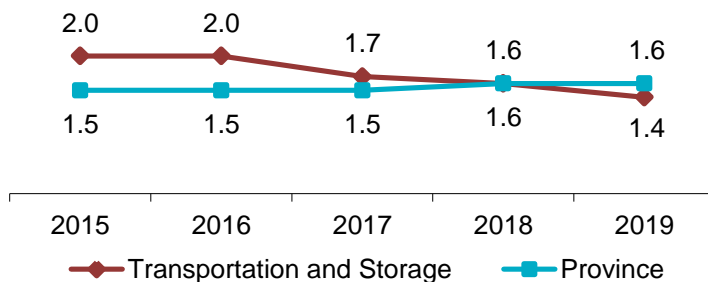
Between 2015 and 2019, annual average employment* increased by 20%, from 10,000 to 12,000 in the industry.



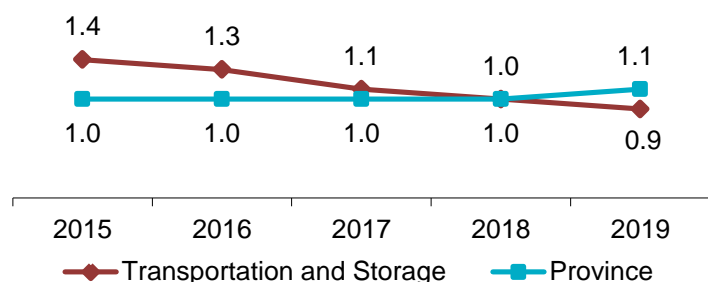
*Source: Statistics Canada

Industry Facts 2019

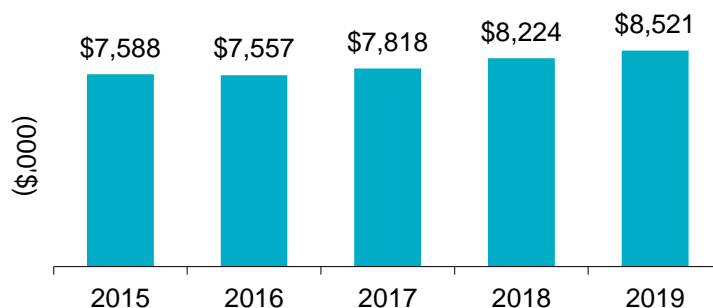
Lost-time Incidence Rate/100 Employees



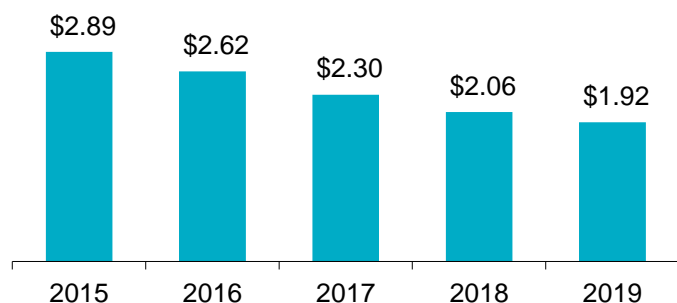
Soft Tissue Incidence Rate/100 Employees



Total Claim Payments



Average Assessment Rate



For more information

Contact WorkplaceNL at: 709.778.1552 or 1.800.563.9000
w workplacenl.ca

WorkplaceNL

Health | Safety | Compensation

FACTS

Transportation and Storage Industry Highlights

continued

Transportation and Storage

Province

	2015	2016	2017	2018	2019	2015	2016	2017	2018	2019
Lost-time	201	197	189	196	169	3,640	3,601	3,386	3,522	3,720
Health Care Only	70	65	66	69	103	1,443	1,621	1,561	1,697	1,651
Fatalities	1	1	2	0	0	24	13	25	36	26
Paid Weeks (000's)	13.9	14.1	14.4	13.3	13.8	254.3	247.4	243.5	244.3	251.5

Lost-time claims by top 5 type of accidents, 2015-2019

Type of Accident	% Total Lost-time Claims
Overexertion in lifting	15%
Fall to floor, walkway, or other surface	14%
Overexertion in pulling or pushing objects	7%
Bending/climbing/crawling/reaching/twisting	7%
Fall from non-moving vehicle	4%

Lost-time claims by top 5 nature of injuries, 2015-2019

Nature of Injury	% Total Lost-time Claims
Sprains, strains, tears	38%
Back pain, hurt back	9%
Fractures	8%
Bruises, contusions	5%
Concussions	3%

Lost-time claims by top 5 parts of body injured, 2015-2019

Body Part	% Total Lost-time Claims
Multiple body parts	17%
Lumbo-sacral region	11%
Lumbar region	9%
Knee(s)	8%
Shoulder, clavicle, scapula, trapezius	7%

Lost-time claims by top 5 occupations, 2015-2019

Occupations	% Total Lost-time Claims
Truck drivers	29%
Air transport ramp attendants	12%
Material handlers	8%
Couriers & door-to-door distributors	8%
Longshore workers	4%

e safety@workplacenl.ca

For more information

Contact WorkplaceNL at: 709.778.1552 or 1.800.563.9000
w workplacenl.ca

WorkplaceNL

Health | Safety | Compensation