

FACTS

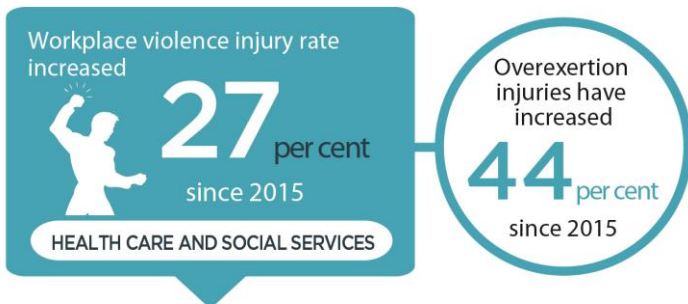
Health Care and Social Services



Industry Highlights

The Health Care and Social Services Industry includes sectors such as hospitals, nursing homes, social services, day care services, physicians' offices, and health and community services.

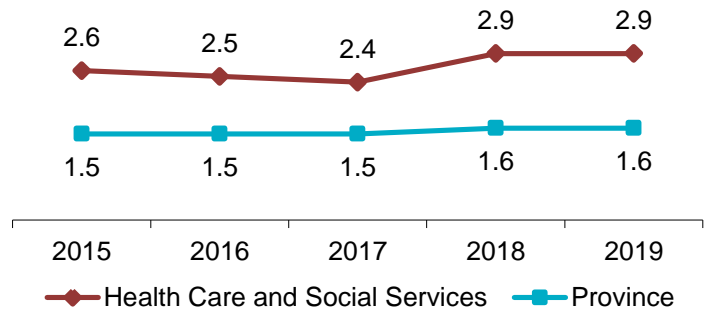
Between 2015 and 2019, annual average employment* increased by 5.3%, from 37,600 to 39,600 in the industry.



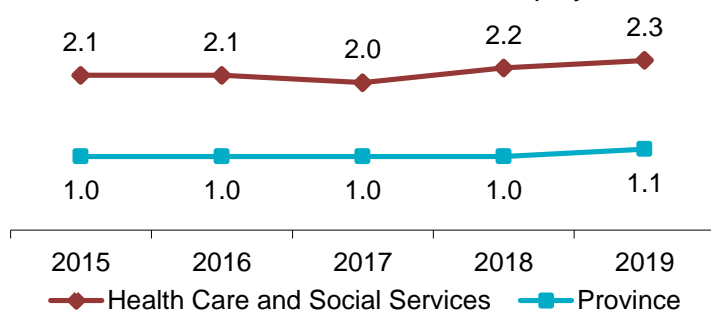
*Source: Statistics Canada

Industry Facts 2019

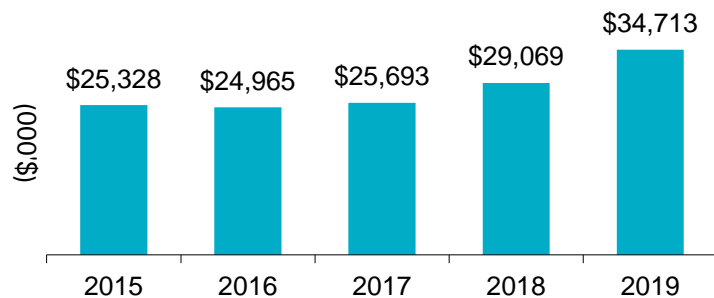
Lost-time Incidence Rate/100 Employees



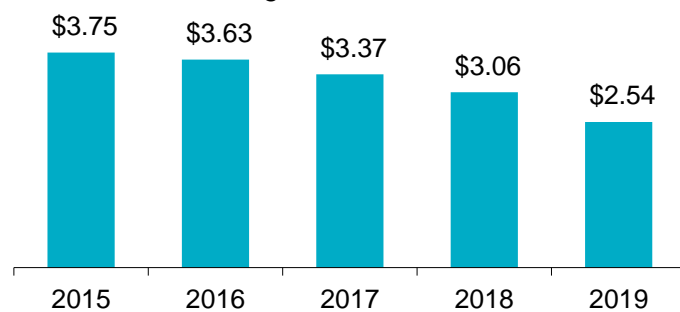
Soft Tissue Incidence Rate/100 Employees



Total Claim Payments



Average Assessment Rate



For more information

Contact WorkplaceNL at: 709.778.1552 or 1.800.563.9000
w workplace.nl.ca

WorkplaceNL

Health | Safety | Compensation

FACTS

Health Care and Social Services Industry Highlights *continued*

Health Care and Social Services

Province

	2015	2016	2017	2018	2019	2015	2016	2017	2018	2019
Lost-time	968	992	960	1,154	1,154	3,640	3,601	3,386	3,522	3,720
Health Care Only	250	287	270	389	377	1,443	1,621	1,561	1,697	1,651
Fatalities	0	0	1	0	1	24	13	25	36	26
Paid Weeks (000's)	57.5	54.8	54.5	57.8	62.2	254.3	247.4	243.5	244.3	251.5

Lost-time claims by top 5 type of accidents, 2015-2019

Type of Accident	% Total Lost-time Claims
Overexertion in lifting	15%
Fall to floor, walkway, or other surface	12%
Bending/climbing/crawling/reaching/twisting	10%
Hitting, kicking, beating	6%
Bodily reaction and exertion	6%

Lost-time claims by top 5 nature of injuries, 2015-2019

Nature of Injury	% Total Lost-time Claims
Sprains, strains, tears	53%
Back pain, hurt back	8%
Bruises, contusions	4%
Rotator cuff tear	3%
Fractures	3%

Lost-time claims by top 5 parts of body injured, 2015-2019

Body Part	% Total Lost-time Claims
Multiple body parts	22%
Shoulder, clavicle, scapula, trapezius	12%
Lumbo-sacral region	10%
Lumbar region	9%
Neck and shoulder	6%

Lost-time claims by top 5 occupations, 2015-2019

Occupations	% Total Lost-time Claims
Personal care attendants	21%
Licensed practical nurses	16%
Light duty cleaners	13%
Registered nurses	12%
Visiting homemakers/related occupations	7%

e safety@workplacnl.ca

For more information

Contact WorkplaceNL at: 709.778.1552 or 1.800.563.9000
w workplacnl.ca

WorkplaceNL

Health | Safety | Compensation