

FACTS

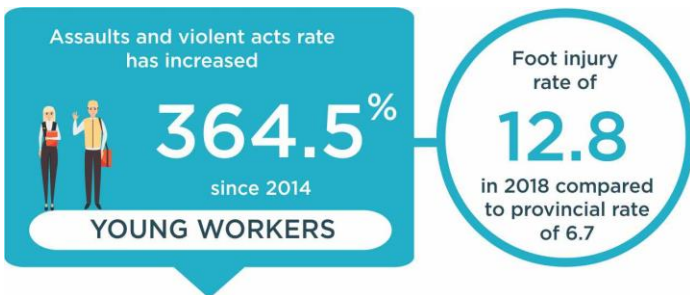
Young Workers



Industry Highlights

A young worker is defined as a person between the age of 15 and 24. They may be at risk of being injured due to lack of occupational health and safety knowledge and work experience. As a result, injuries often occur during the first few weeks on the job.

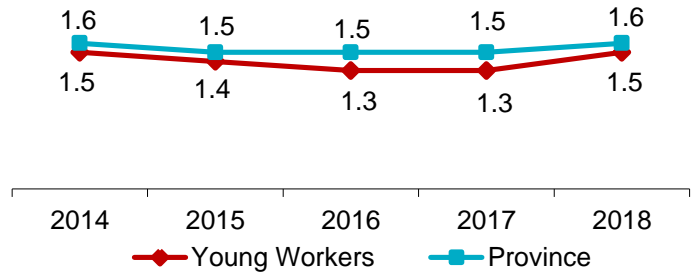
The number of young workers employed in the province fluctuates, with peak employment during the summer months. Between 2014 and 2018, young worker annual average employment* decreased by 12.3%, from 29,300 to 25,700.



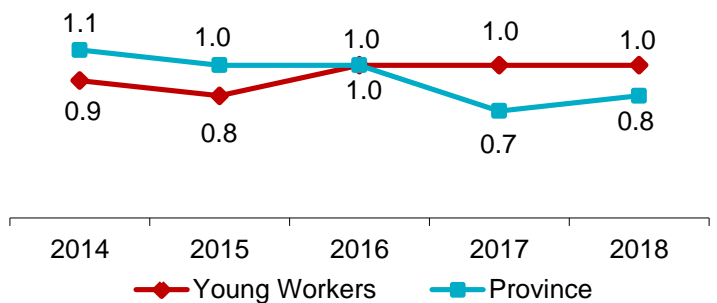
*Source: Statistics Canada

Industry Facts 2018

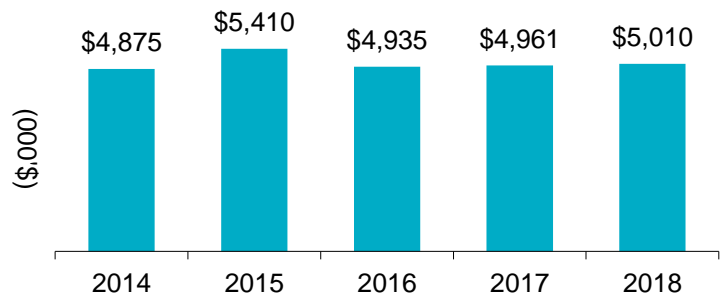
Lost-time Incidence Rate/100 Employees



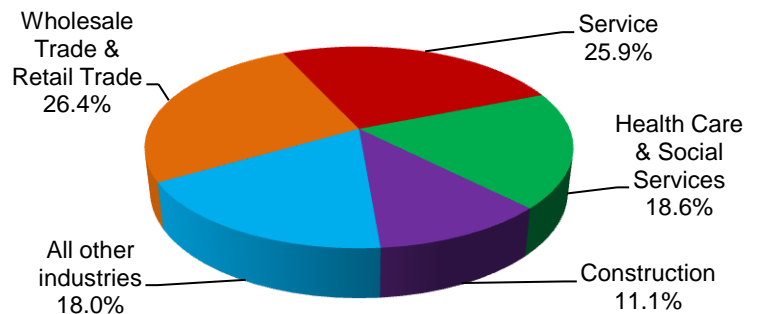
Soft Tissue Incidence Rate/100 Employees



Total Claim Payments



Percentage of Young Worker Lost-time Claims by Industry (2014 - 2018)



For more information

Contact WorkplaceNL at: 709.778.1552 or 1.800.563.9000
w workplacenl.ca

WorkplaceNL

Health | Safety | Compensation

FACTS

Young Workers Industry Highlights *continued*

Young Workers

Province

	2014	2015	2016	2017	2018	2014	2015	2016	2017	2018
Lost-time	432	428	372	369	390	3,793	3,640	3,601	3,386	3,522
Health Care Only	178	147	165	134	147	1,563	1,443	1,621	1,561	1,697
Fatalities	0	1	0	0	0	29	24	13	25	36
Paid Weeks (000's)	8.4	8.0	7.8	8.1	7.9	260.1	254.3	247.4	243.5	244.3

Lost-time claims by top 5 type of accidents, 2014-2018

Type of Accident	% Total Lost-time Claims
Fall to floor, walkway, or other surface	12%
Overexertion in lifting	12%
Contact with hot objects or substances	6%
Bending/climbing/crawling/reaching/twisting	5%
Struck by falling object	4%

Lost-time claims by top 5 nature of injuries, 2014-2018

Nature of Injury	% Total Lost-time Claims
Sprains, strains, tears	38%
Cuts, lacerations	8%
Back pain, hurt back	7%
Bruises, contusions	6%
Fractures	6%

Lost-time claims by top 5 parts of body injured, 2014-2018

Body Part	% Total Lost-time Claims
Multiple body parts	14%
Finger(s), fingernail(s)	7%
Lumbar region	7%
Lumbo-sacral region	7%
Knee(s)	7%

Lost-time claims by top 5 occupations, 2014-2018

Occupations	% Total Lost-time Claims
Food counter attendants/kitchen/related	10%
Retail salespersons & sales clerks	7%
Material handlers	7%
Construction trades helpers labourers	6%
Personal care attendants	5%

e safety@workplacenl.ca

For more information

Contact WorkplaceNL at: 709.778.1552 or 1.800.563.9000
w workplacenl.ca

WorkplaceNL

Health | Safety | Compensation