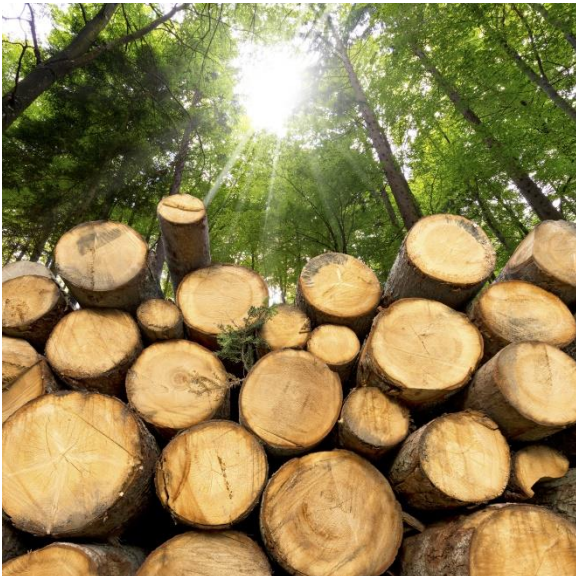


FACTS

Forestry



Industry Highlights


The Forestry Industry includes sectors such as wood harvesting, pulp and paper mills, and silviculture.

Between 2014 and 2018, there were fluctuations in the annual average employment* in the industry. However, in 2018 employment returned to the 2014 level of 1,400.

32.1%

of lost-time claims are related to sprains and strains in 2018

FORESTRY



Fall from heights rate

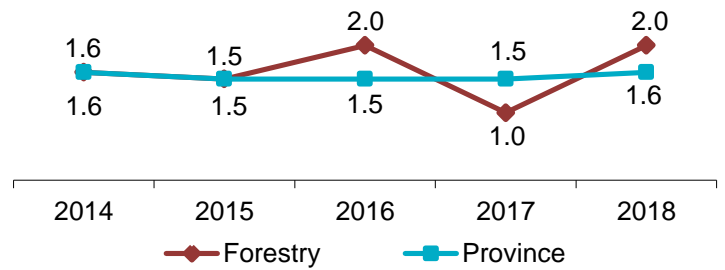
14.3

in 2018 compared to provincial rate of 7.0

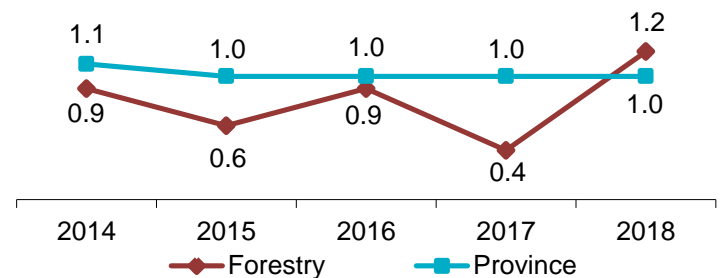
*Source: Statistics Canada

Industry Facts 2018

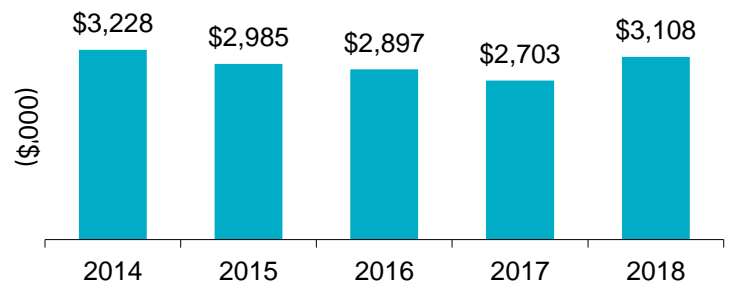
Lost-time Incidence Rate/100 Employees



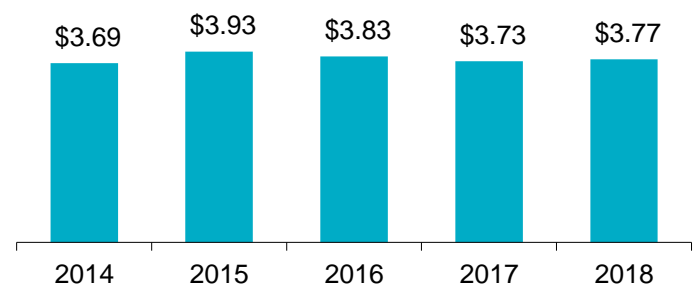
Soft Tissue Incidence Rate/100 Employees



Total Claim Payments



Average Assessment Rate



For more information

Contact WorkplaceNL at: 709.778.1552 or 1.800.563.9000
w workplacenl.ca

WorkplaceNL

Health | Safety | Compensation

FACTS

Forestry Industry Highlights *continued*

Forestry

Province

	2014	2015	2016	2017	2018	2014	2015	2016	2017	2018
Lost-time	22	25	26	17	28	3,793	3,640	3,601	3,386	3,522
Health Care Only	10	11	10	17	8	1,563	1,443	1,621	1,561	1,697
Fatalities	1	0	0	0	0	29	24	13	25	36
Paid Weeks (000's)	5.6	5.0	4.6	4.4	4.8	260.1	254.3	247.4	243.5	244.3

Lost-time claims by top 5 type of accidents, 2014-2018

Type of Accident	% Total Lost-time Claims
Fall to floor, walkway, or other surface	11%
Struck by object	7%
Bending/climbing/crawling/reaching/twisting	7%
Overexertion in pulling or pushing objects	7%
Caught in/compressed by equipment/objects	7%

Lost-time claims by top 5 nature of injuries, 2014-2018

Nature of Injury	% Total Lost-time Claims
Sprains, strains, tears	29%
Fractures	13%
Back pain, hurt back	8%
Cuts, lacerations	7%
Bruises, contusions	7%

Lost-time claims by top 5 parts of body injured, 2014-2018

Body Part	% Total Lost-time Claims
Multiple body parts	16%
Lumbo-sacral region	11%
Knee(s)	7%
Finger(s), fingernail(s)	7%
Ankle(s)	6%

Lost-time claims by top 5 occupations, 2014-2018

Occupations	% Total Lost-time Claims
Labour wood pulp paper process	18%
Heavy equipment operator-except crane	9%
Papermaker & finishing machine operator	7%
Material handlers	7%
Construction trades helpers labourers	7%

e safety@workplacenl.ca

For more information

Contact WorkplaceNL at: 709.778.1552 or 1.800.563.9000
w workplacenl.ca

WorkplaceNL

Health | Safety | Compensation